

WBS NO: 2026CPT.01.17.10281, ETC.

CONTRACT: DA00668

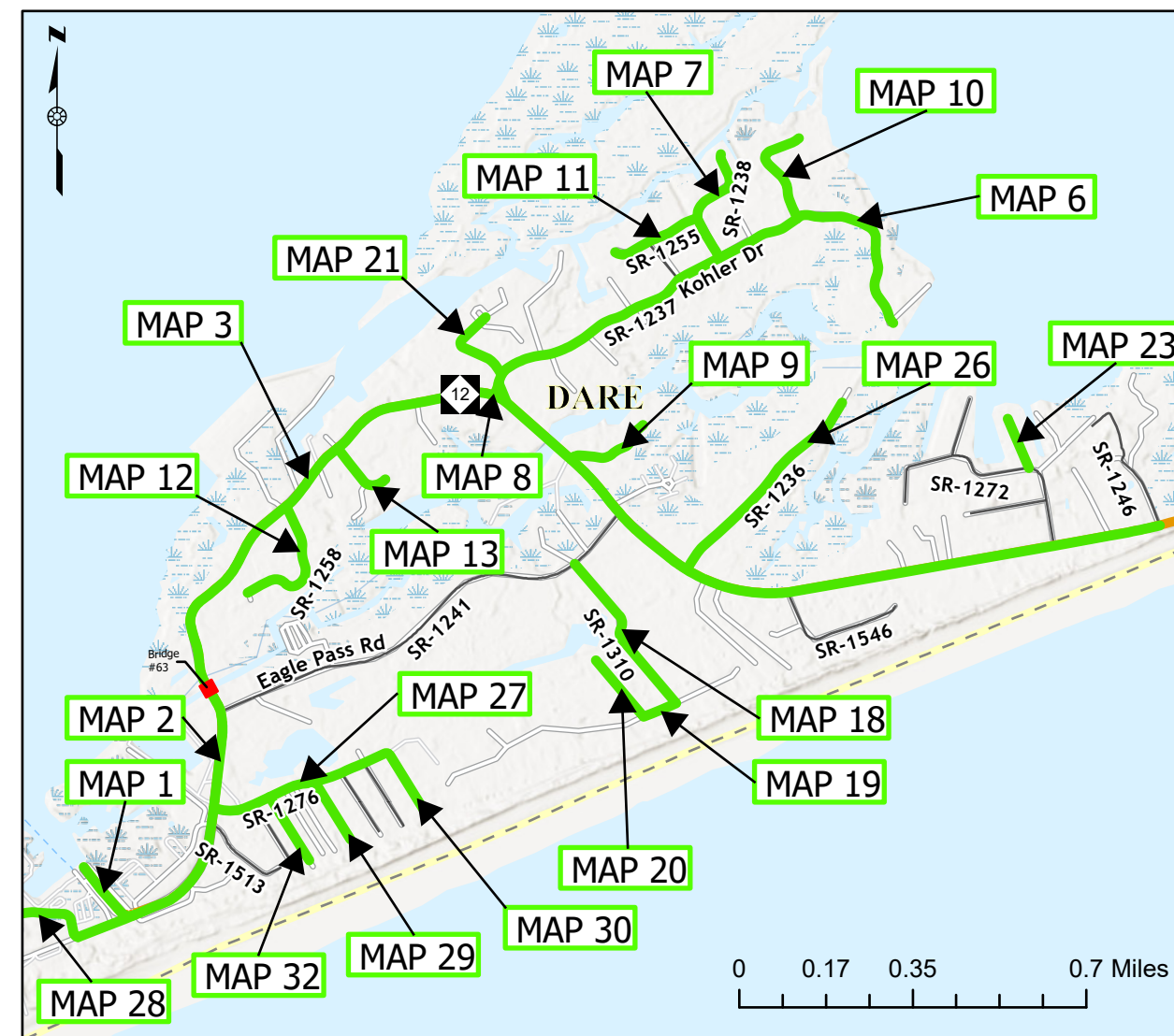
**STATE OF NORTH CAROLINA
DIVISION OF HIGHWAYS**

DARE

STATE	STATE PROJECT REFERENCE NUMBER	SHEET NO.
NC	2026CPT.01.17.10281, ETC.	1
STATE PROJECT NUMBER		DESCRIPTION
2026CPT.01.17.10281		P.E., CONST.
2026CPT.01.17.20281		P.E., CONST.
2026CPT.01.17.20282		P.E., CONST.

MAP	ROUTE	FROM	TO
01	NC 12	Hatteras Ferry Dock	NC12 Intersection
02	NC 12	SR-1499 (Coast Guard Rd.)	Bridge #63
03	NC 12	Bridge #63	SR-1246 (Austin Rd.)
06	SR 1237 (Kohler Dr.)	EOM	NC 12
07	SR 1238 (Altona Lane)	Dead End	SR 1237 (Kohler Dr.)
08	SR 1239 (Kohler Dr.)	SR 1237 (Kohler Dr.)	NC 12
09	SR 1248 (Islington Rd.)	Dead End	NC 12
10	SR 1253 (Pricilla Curve Rd.)	Dead End	SR 1237 (Kohler Rd.)
11	SR 1255 (MV Australia Lane)	Dead End	SR 1238 (Altona Lane)
12	SR 1258 (Fulcher Rd.)	Dead End	NC 12
13	SR 1266 (Waltham Rd.)	Dead End	NC 12
18	SR 1310 (Flambeau Rd.)	SR 1241 (Eagle Pass Rd.)	SR 1311 (Lighthouse Rd.)
19	SR 1311 (Lighthouse Rd.)	SR 1310 (Flambeau Rd.)	SR 1312 (Sea Scape Rd.)
20	SR 1312 (Sea Scape Rd.)	Dead End	SR 1311 (Lighthouse Rd.)
21	SR 1340 (Saxon Cut Dr.)	Marlin Club	SR 1237 (Kohler Rd.)
23	SR 1430 (Pamlico Dr.)	CDS	SR 1272 (Elizabeth Ave.)
26	SR 1236 (C. Deering Ridge Rd.)	Dead End	NC 12
27	SR 1276 (Woodall Way)	SR 1511 (Sea View Dr.)	NC 12
28	SR 1499 (Coast Guard Access Rd.)	EOM	EOM
29	SR 1505 (Sutton Place)	Dead End	SR 1276 (Woodall Way)
30	SR 1511 (Sea View Dr.)	SR 1276 (Woodall Way)	CDS
32	SR 1554 (Empire Gem Lane)	Dead End	SR 1276 (Woodall Way)

TYPE OF WORK: MILLING, RESURFACING, & THIN-LIFT RESURFACING



PROJECT LENGTH

MAP	MILES	MAP	MILES	MAP	MILES	MAP	MILES	MAP	MILES
01	0.12	08	0.022	13	0.11	23	0.088	30	0.115
02	0.55	09	0.120	18	0.29	26	0.379	32	0.123
03	2.02	10	0.183	19	0.058	27	0.307		
06	0.903	11	0.151	20	0.121	28	0.159		
07	0.160	12	0.208	21	0.120	29	0.111		

Prepared in the Office of:
DIVISION OF HIGHWAYS
113 AIRPORT DR., EDENTON, NC 27932

B. N. BRASWELL, PE
DIV. PROJ. DEVELOPMENT ENGINEER

M. S. WINSLOW
DIVISION CONTRACT ENGINEER

D. J. CLODGO, PE, PMP
DIVISION PROJECT TEAM LEAD

D. H. STALLINGS
DIVISION DESIGN ENGINEER



WBS NO: 2026CPT.01.17.10281, ETC.

CONTRACT: DA00668

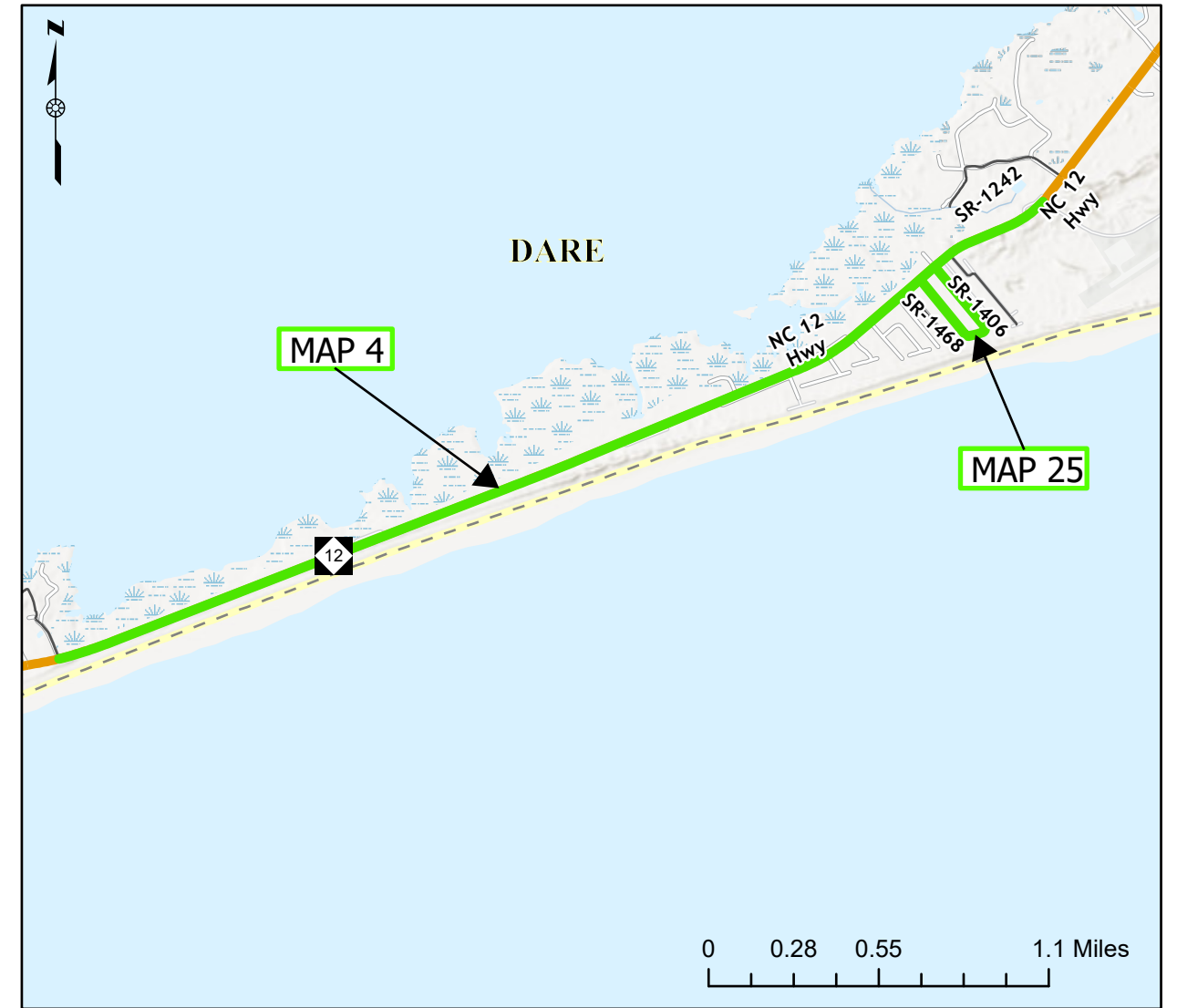
**STATE OF NORTH CAROLINA
DIVISION OF HIGHWAYS**

DARE

TYPE OF WORK: MILLING & RESURFACING

STATE	STATE PROJECT REFERENCE NUMBER	SHEET NO.
NC	2026CPT.01.17.10281, ETC.	2
STATE PROJECT NUMBER		DESCRIPTION
2026CPT.01.17.10281		P.E., CONST.
2026CPT.01.17.20281		P.E., CONST.

MAP	ROUTE	FROM	TO
04	NC 12	SR-1246 (Austin Rd.)	Billy Mitchell Rd.
25	SR 1468 (Runboat Rd.)	NC 12	NC 12



PROJECT LENGTH

MAP	MILES
04	2.89
25	0.46

Prepared in the Office of:
DIVISION OF HIGHWAYS
113 AIRPORT DR., EDENTON, NC 27932

B. N. BRASWELL, PE
DIV. PROJ. DEVELOPMENT ENGINEER

M. S. WINSLOW
DIVISION CONTRACT ENGINEER

D. J. CLODGO, PE, PMP
DIVISION PROJECT TEAM LEAD

D. H. STALLINGS
DIVISION DESIGN ENGINEER



WBS NO: 2026CPT.01.17.10281, ETC.

CONTRACT: DA00668

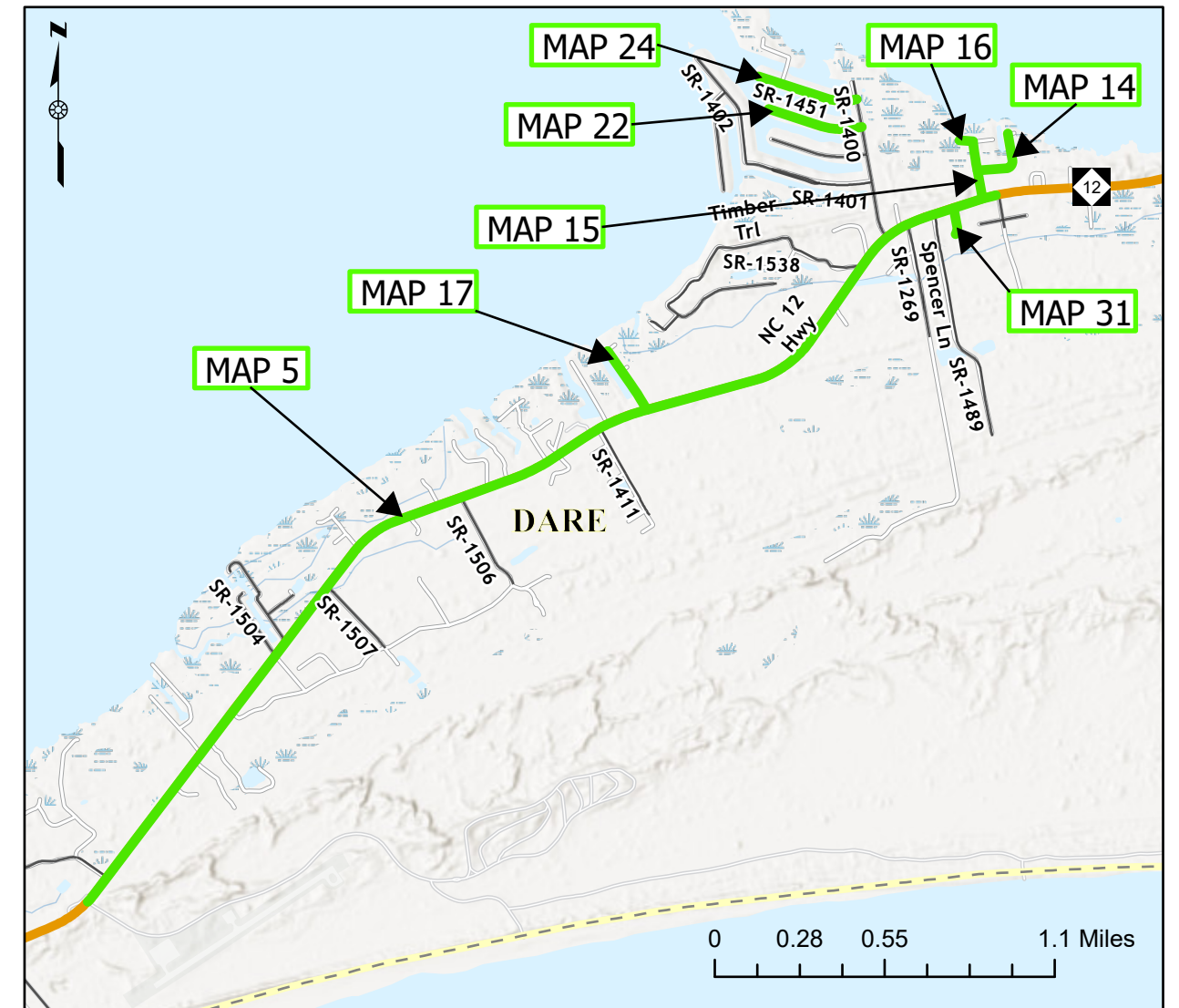
**STATE OF NORTH CAROLINA
DIVISION OF HIGHWAYS**

DARE

STATE	STATE PROJECT REFERENCE NUMBER	SHEET NO.
NC	2026CPT.01.17.10281, ETC.	3
STATE PROJECT NUMBER		DESCRIPTION
2026CPT.01.17.10281		P.E., CONST.
2026CPT.01.17.20281		P.E., CONST.
2026CPT.01.17.20282		P.E., CONST.

TYPE OF WORK: MILLING, RESURFACING, & THIN-LIFT RESURFACING

MAP	ROUTE	FROM	TO
05	NC 12	Billy Mitchell Rd.	SR 1482 (Buccaneer Dr.)
14	SR 1294 (Bayside Court)	Dead End	SR 1295 (Paradise Drive)
15	SR 1295 (Paradise Dr.)	SR 1296 (Utopia Lane)	NC 12
16	SR 1296 (Utopia Lane)	Dead End	SR 1293 (Seabreeze Drive)
17	SR 1298 (Lassiter Lane)	Dead End	NC 12
22	SR 1426 (Freebooter Ct.)	CDS	SR 1400 (Buccaneer Dr.)
24	SR 1451 (Blackbeards Ct.)	CDS	SR 1400 (Buccaneer Dr.)
31	SR 1526 (Cedar Ct.)	NC 12	CDS



PROJECT LENGTH

MAP	MILES	MAP	MILES
05	3.16	17	0.186
14	0.178	22	0.255
15	0.15	24	0.27
16	0.036	31	0.07

Prepared in the Office of:
DIVISION OF HIGHWAYS
113 AIRPORT DR., EDENTON, NC 27932

B. N. BRASWELL, PE
DIV. PROJ. DEVELOPMENT ENGINEER

D. J. CLODGO, PE, PMP
DIVISION PROJECT TEAM LEAD

M. S. WINSLOW
DIVISION CONTRACT ENGINEER

D. H. STALLINGS
DIVISION DESIGN ENGINEER



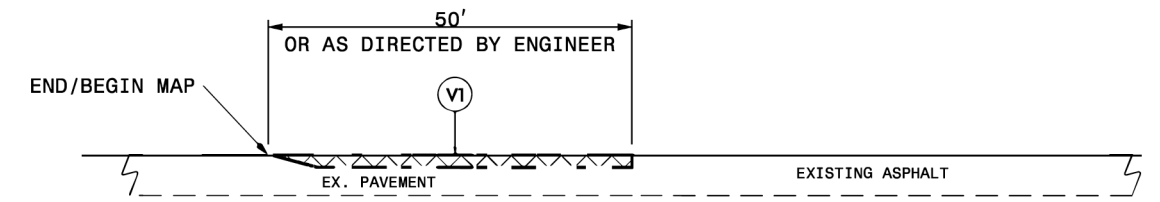
PAVEMENT SCHEDULE

C1	PROP. APPROX. 1.50" ASPHALT CONCRETE SURFACE COURSE, TYPE S9.5C, AT AN AVERAGE RATE OF 168 LBS. PER SQ. YD.
V1	INCIDENTAL MILLING
V2	MILLING ASPHALT PAVEMENT, 1.5" DEPTH
U	EXISTING PAVEMENT

PROJECT REFERENCE NO.	SHEET NO.
2026CPT.01.17.10281, ETC.	4

NOTES:

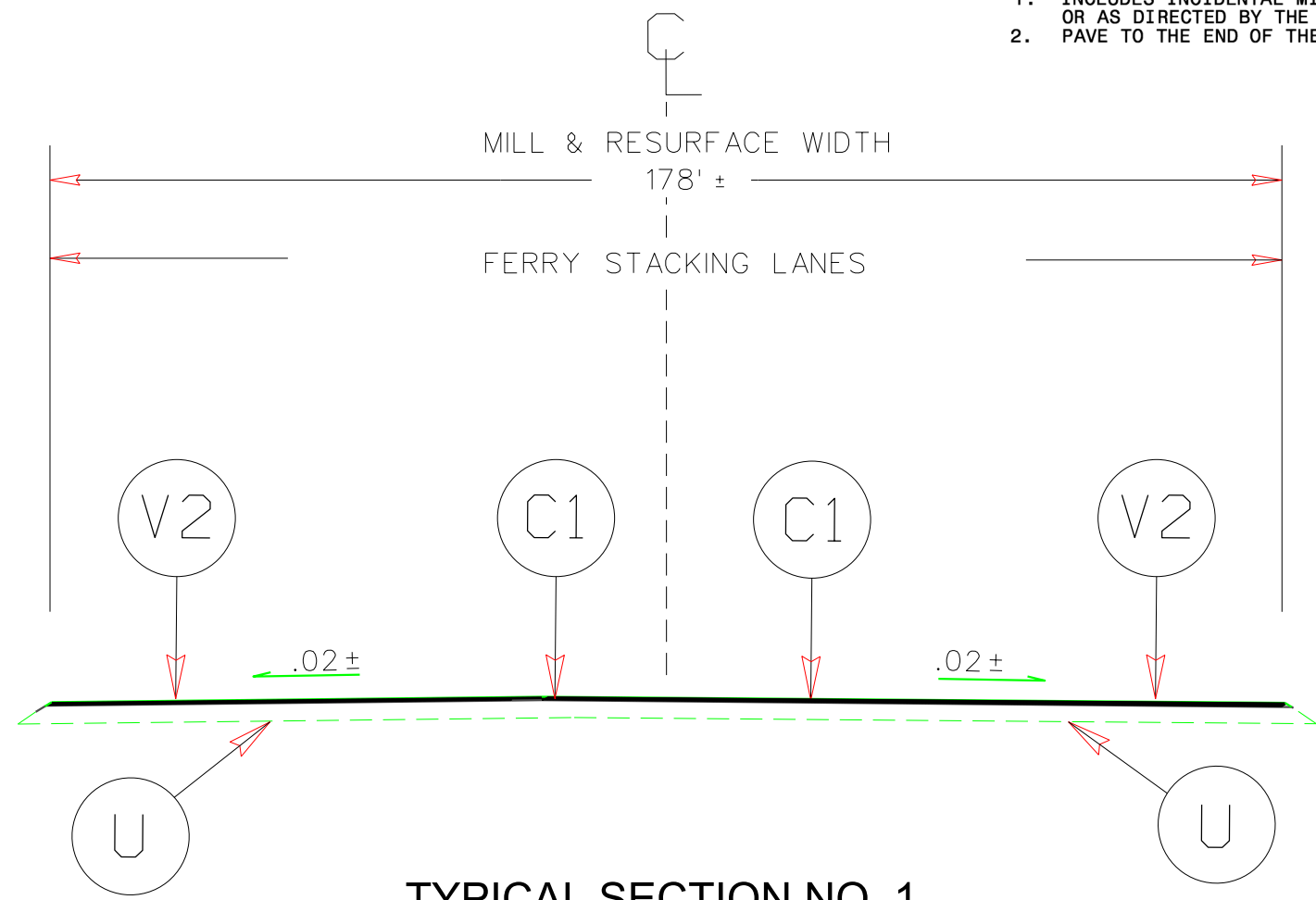
- * ALL INTERSECTING ROADS ARE TO BE RESURFACED TO THE ENDS OF THEIR RADII, THE MAIN LINE RIGHT OF WAY OR AS DIRECTED BY THE ENGINEER. THIS SHALL INCLUDE ANY TAPERS AND TURN LANES LOCATED BOTH ON THE MAIN LINE OR INTERSECTING PAVED ROADWAY.
- * EDGES, PAVEMENT WIDENING, INTERSECTIONS AND BRIDGE FLARES ARE INCLUDED IN THE SUMMARY OF QUANTITIES.
- * 1.5" OF S9.5C TO BE APPLIED THE FULL WIDTH OF THE ROADWAY
- * SHOULDER WEDGE SHALL BE USED ON ALL ROADS 22' OR WIDER, OR AS DIRECTED BY THE ENGINEER
- * USE OF A MATERIAL TRANSFER VEHICLE IS REQUIRED ON MAP 1



DETAIL 1

MAIN LINE MILLING

- NOTE:
1. INCLUDES INCIDENTAL MILLING AT THE ENDS OF MAIN LINE SECTIONS, OR AS DIRECTED BY THE ENGINEER.
 2. PAVE TO THE END OF THE MILLED SURFACE TO CREATE A SMOOTH TRANSITION.



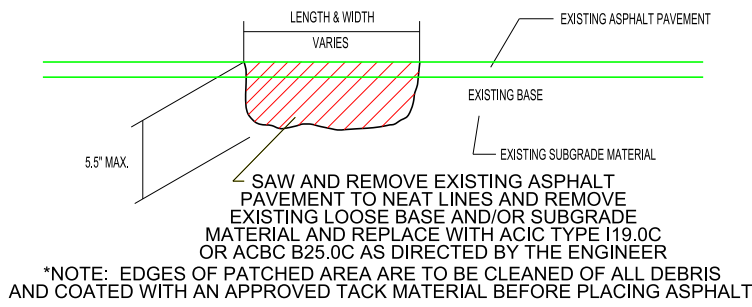
TYPICAL SECTION NO. 1
USE WITH MAP 1

PAVEMENT SCHEDULE

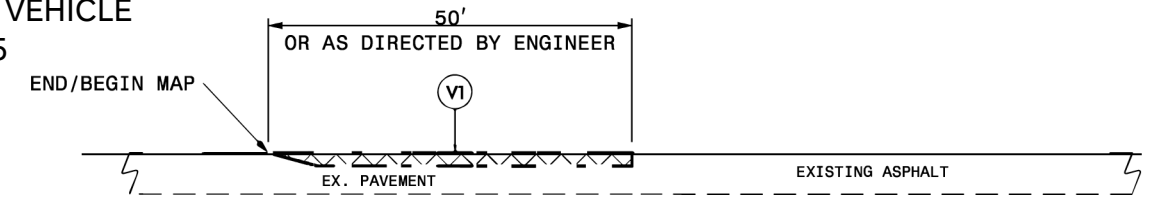
C1	PROP. APPROX. 1.50" ASPHALT CONCRETE SURFACE COURSE, TYPE S9.5C, AT AN AVERAGE RATE OF 168 LBS. PER SQ. YD.
V1	INCIDENTAL MILLING
V2	MILLING ASPHALT PAVEMENT, 1.5" DEPTH
U	EXISTING PAVEMENT
T	SHOULDER RECONSTRUCTION

NOTES:

- * ALL INTERSECTING ROADS ARE TO BE RESURFACED TO THE ENDS OF THEIR RADII, THE MAIN LINE RIGHT OF WAY OR AS DIRECTED BY THE ENGINEER. THIS SHALL INCLUDE ANY TAPERS AND TURN LANES LOCATED BOTH ON THE MAIN LINE OR INTERSECTING PAVED ROADWAY.
- * EDGES, PAVEMENT WIDENING, INTERSECTIONS AND BRIDGE FLARES ARE INCLUDED IN THE SUMMARY OF QUANTITIES.
- * 1.5" OF S9.5C TO BE APPLIED THE FULL WIDTH OF THE ROADWAY
- * SHOULDER WEDGE SHALL BE USED ON ALL ROADS 22' OR WIDER, OR AS DIRECTED BY THE ENGINEER
- * INCIDENTAL MILLING IS TO BE PERFORMED ON MAPS 2, 3, & 5 AS DIRECTED BY THE ENGINEER
- * CONTRACTOR SHALL PERFORM PATCHING EXISTING PAVEMENT, FULL DEPTH ON MAP 5 ONLY BEFORE APPLICATION OF 1.5" OF 9.5C
- * USE OF A MATERIAL TRANSFER VEHICLE IS REQUIRED ON MAPS 2, 3, & 5

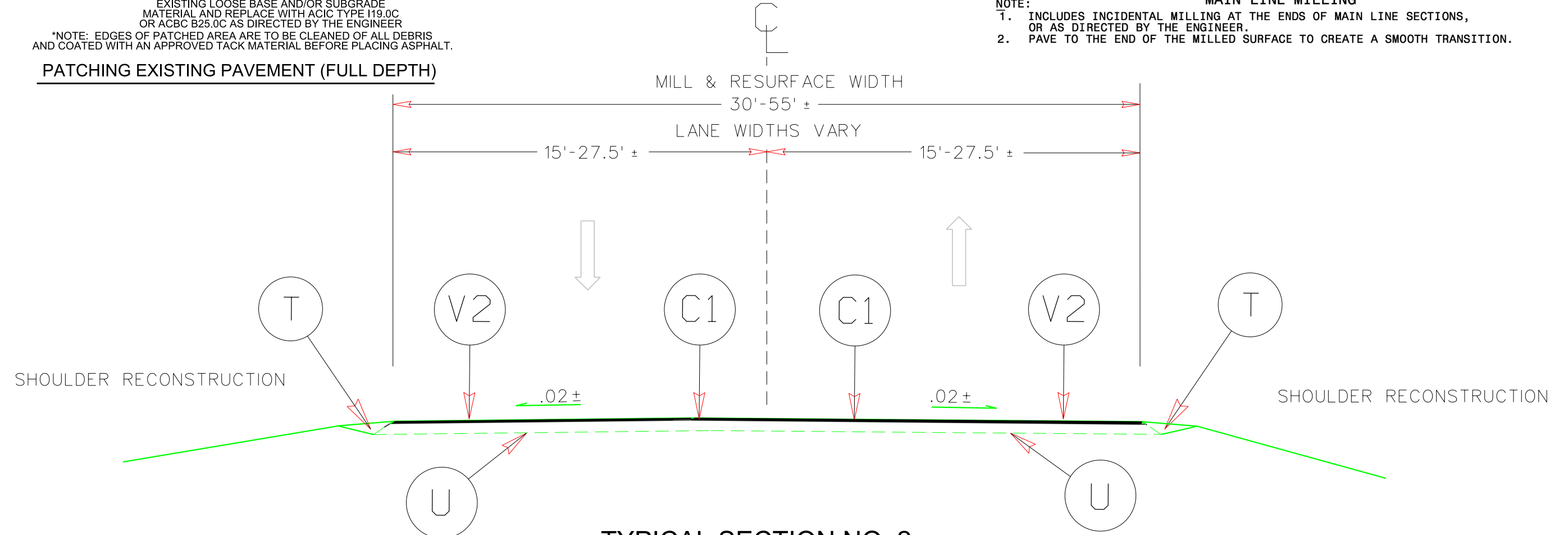


PATCHING EXISTING PAVEMENT (FULL DEPTH)



DETAIL 1

- NOTE:
1. INCLUDES INCIDENTAL MILLING AT THE ENDS OF MAIN LINE SECTIONS, OR AS DIRECTED BY THE ENGINEER.
 2. PAVE TO THE END OF THE MILLED SURFACE TO CREATE A SMOOTH TRANSITION.



TYPICAL SECTION NO. 2
USE WITH MAPS 2, 3, & 5

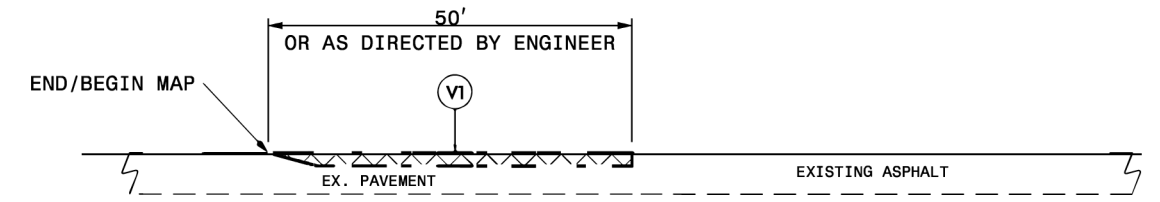
PAVEMENT SCHEDULE

C1	PROP. APPROX. 1.50" ASPHALT CONCRETE SURFACE COURSE, TYPE S9.5C, AT AN AVERAGE RATE OF 168 LBS. PER SQ. YD.
V1	INCIDENTAL MILLING
V2	MILLING ASPHALT PAVEMENT, 1.5" DEPTH
U	EXISTING PAVEMENT

NOTES:

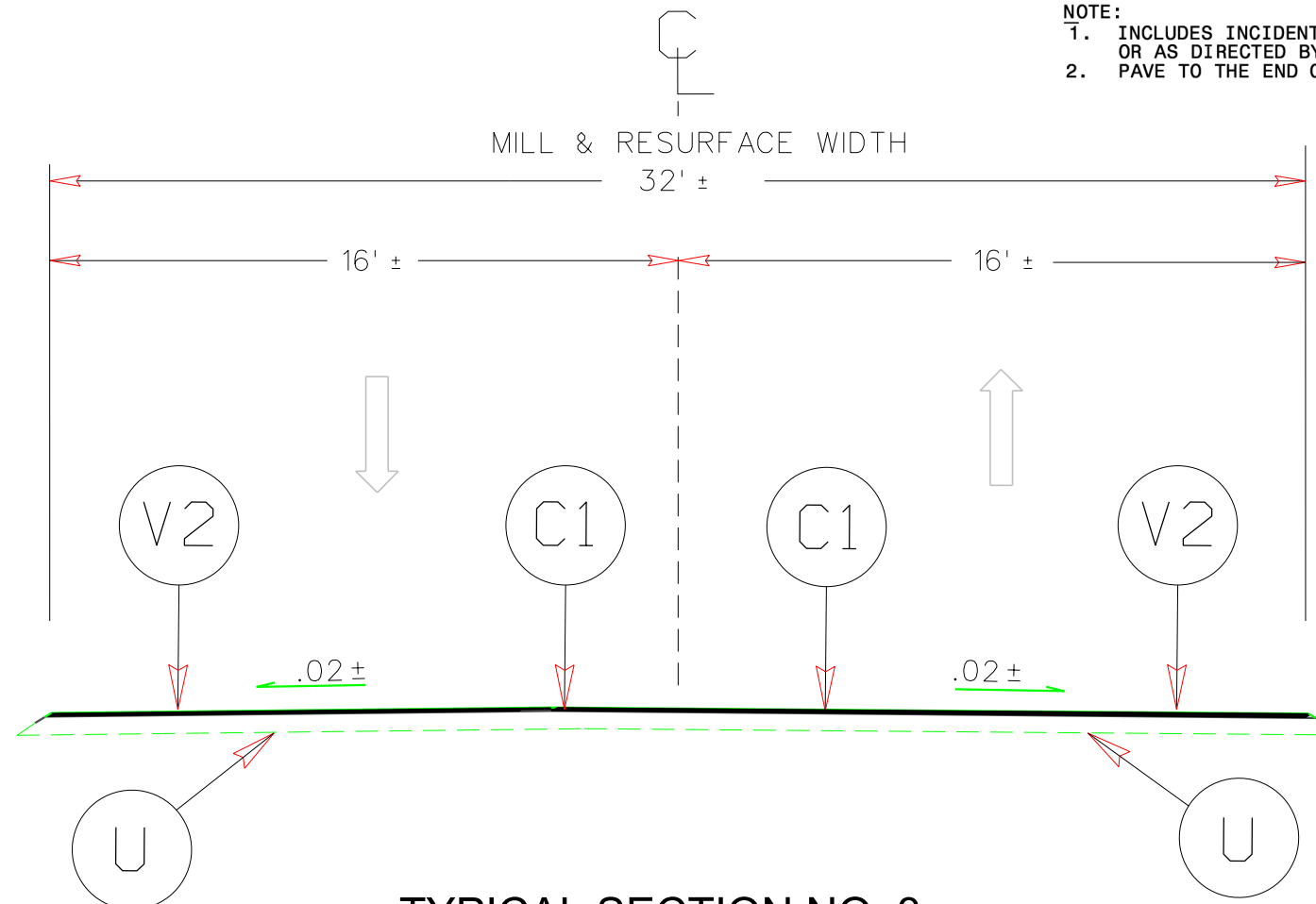
- * ALL INTERSECTING ROADS ARE TO BE RESURFACED TO THE ENDS OF THEIR RADII, THE MAIN LINE RIGHT OF WAY OR AS DIRECTED BY THE ENGINEER. THIS SHALL INCLUDE ANY TAPERS AND TURN LANES LOCATED BOTH ON THE MAIN LINE OR INTERSECTING PAVED ROADWAY.
- * EDGES, PAVEMENT WIDENING, INTERSECTIONS AND BRIDGE FLARES ARE INCLUDED IN THE SUMMARY OF QUANTITIES.
- * 1.5" OF S9.5C TO BE APPLIED THE FULL WIDTH OF THE ROADWAY
- * SHOULDER WEDGE SHALL BE USED ON ALL ROADS 22' OR WIDER, OR AS DIRECTED BY THE ENGINEER
- * INCIDENTAL MILLING IS TO BE PERFORMED ON MAP 4 AS DIRECTED BY THE ENGINEER
- * USE OF A MATERIAL TRANSFER VEHICLE IS REQUIRED ON MAP 4

PROJECT REFERENCE NO. 2026CPT.01.17.10281, ETC.	SHEET NO. 6
--	----------------



DETAIL 1

- NOTE:
1. INCLUDES INCIDENTAL MILLING AT THE ENDS OF MAIN LINE SECTIONS, OR AS DIRECTED BY THE ENGINEER.
 2. PAVE TO THE END OF THE MILLED SURFACE TO CREATE A SMOOTH TRANSITION.



TYPICAL SECTION NO. 3
USE WITH MAP 4

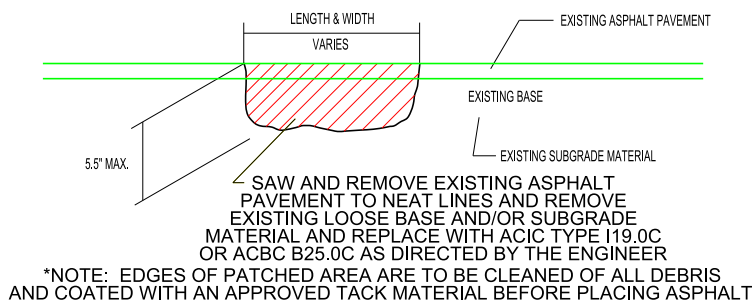
PAVEMENT SCHEDULE

C2	PROP. APPROX. 1.50" ASPHALT CONCRETE SURFACE COURSE, TYPE S9.5B, AT AN AVERAGE RATE OF 165 LBS. PER SQ. YD.
V1	INCIDENTAL MILLING
U	EXISTING PAVEMENT
T	SHOULDER RECONSTRUCTION

PROJECT REFERENCE NO.	SHEET NO.
2026CPT.01.17.10281, ETC.	7

NOTES:

- * ALL INTERSECTING ROADS ARE TO BE RESURFACED TO THE ENDS OF THEIR RADII, THE MAIN LINE RIGHT OF WAY OR AS DIRECTED BY THE ENGINEER. THIS SHALL INCLUDE ANY TAPERS AND TURN LANES LOCATED BOTH ON THE MAIN LINE OR INTERSECTING PAVED ROADWAY.
- * EDGES, PAVEMENT WIDENING, INTERSECTIONS AND BRIDGE FLARES ARE INCLUDED IN THE SUMMARY OF QUANTITIES.
- * 1.5" OF S9.5B TO BE APPLIED THE FULL WIDTH OF THE ROADWAY
- * INCIDENTAL MILLING IS TO BE PERFORMED ON MAPS 6 & MAP 21 AS DIRECTED BY THE ENGINEER
- * CONTRACTOR SHALL PERFORM PATCHING EXISTING PAVEMENT, FULL DEPTH ON MAPS 6 - 7, 9 - 18, & 20 - 25 ONLY BEFORE APPLICATION OF 1.5" OF 9.5B



*NOTE: EDGES OF PATCHED AREA ARE TO BE CLEANED OF ALL DEBRIS AND COATED WITH AN APPROVED TACK MATERIAL BEFORE PLACING ASPHALT.

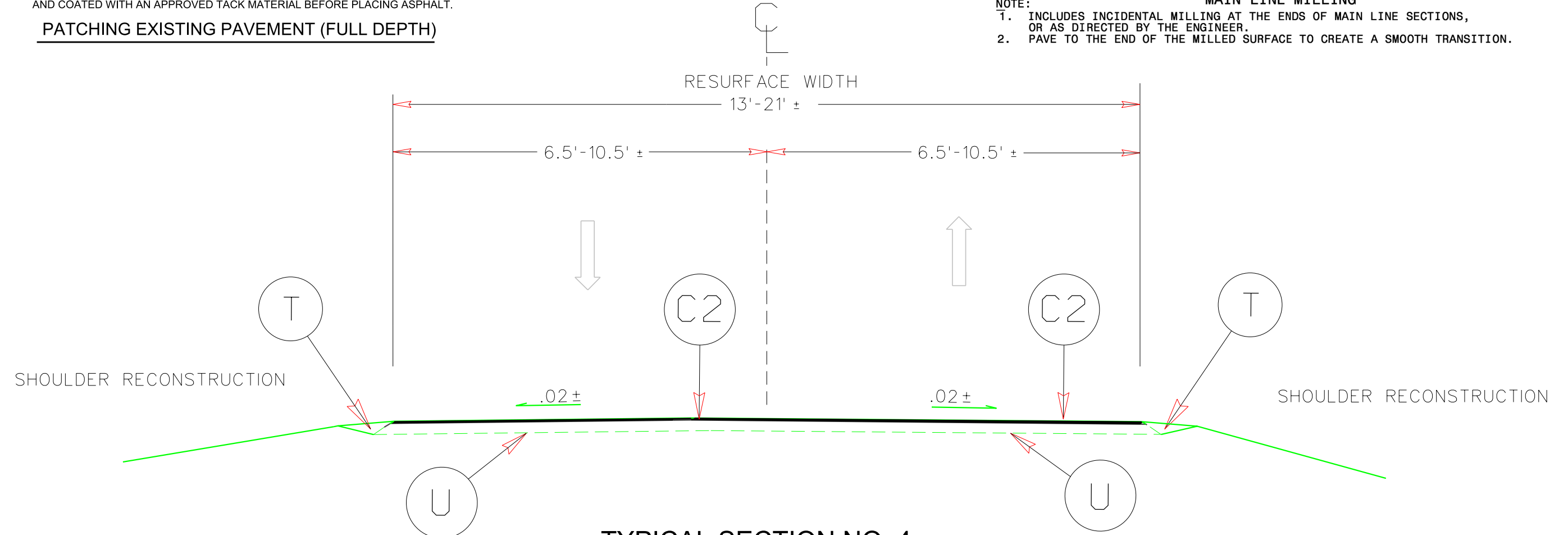
PATCHING EXISTING PAVEMENT (FULL DEPTH)



DETAIL 1

MAIN LINE MILLING

- NOTE:
1. INCLUDES INCIDENTAL MILLING AT THE ENDS OF MAIN LINE SECTIONS, OR AS DIRECTED BY THE ENGINEER.
 2. PAVE TO THE END OF THE MILLED SURFACE TO CREATE A SMOOTH TRANSITION.



TYPICAL SECTION NO. 4
USE WITH MAPS 6 - 7 & 9 - 25

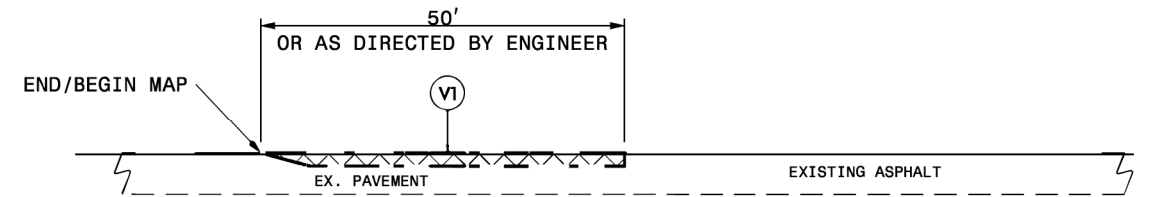
PAVEMENT SCHEDULE

C2	PROP. APPROX. 1.5" ASPHALT CONCRETE SURFACE COURSE, TYPE S9.5B, AT AN AVERAGE RATE OF 165 LBS. PER SQ. YD.
V1	INCIDENTAL MILLING
V2	MILLING ASPHALT PAVEMENT, 1.5" DEPTH
U	EXISTING PAVEMENT

PROJECT REFERENCE NO. 2026CPT.01.17.10281, ETC.	SHEET NO. 8
--	----------------

NOTES:

- * ALL INTERSECTING ROADS ARE TO BE RESURFACED TO THE ENDS OF THEIR RADII, THE MAIN LINE RIGHT OF WAY OR AS DIRECTED BY THE ENGINEER. THIS SHALL INCLUDE ANY TAPERS AND TURN LANES LOCATED BOTH ON THE MAIN LINE OR INTERSECTING PAVED ROADWAY.
- * EDGES, PAVEMENT WIDENING, INTERSECTIONS AND BRIDGE FLARES ARE INCLUDED IN THE SUMMARY OF QUANTITIES.
- * 1.5" OF S9.5B TO BE APPLIED THE FULL WIDTH OF THE ROADWAY
- * INCIDENTAL MILLING IS TO BE PERFORMED ON MAP 8 AS DIRECTED BY THE ENGINEER

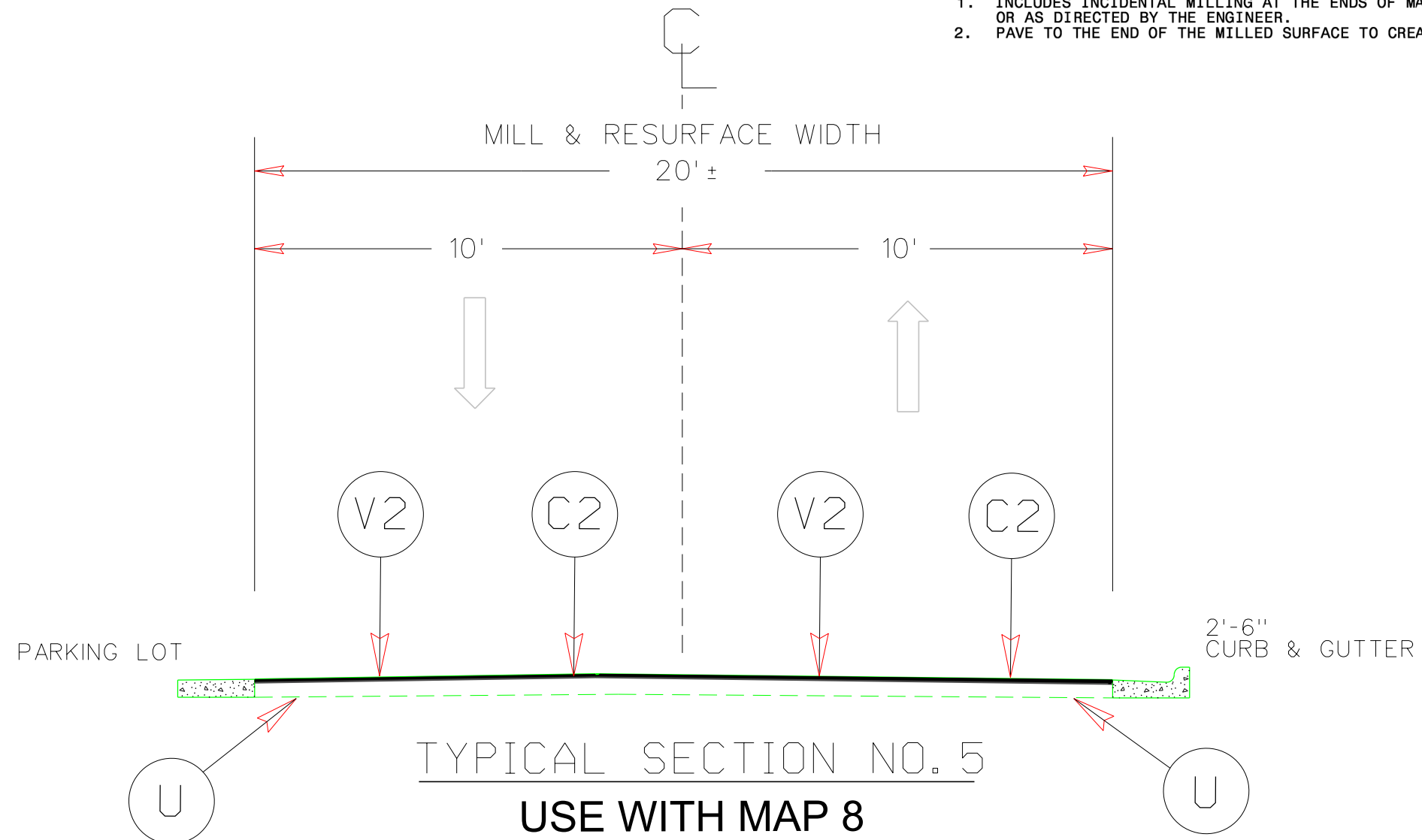


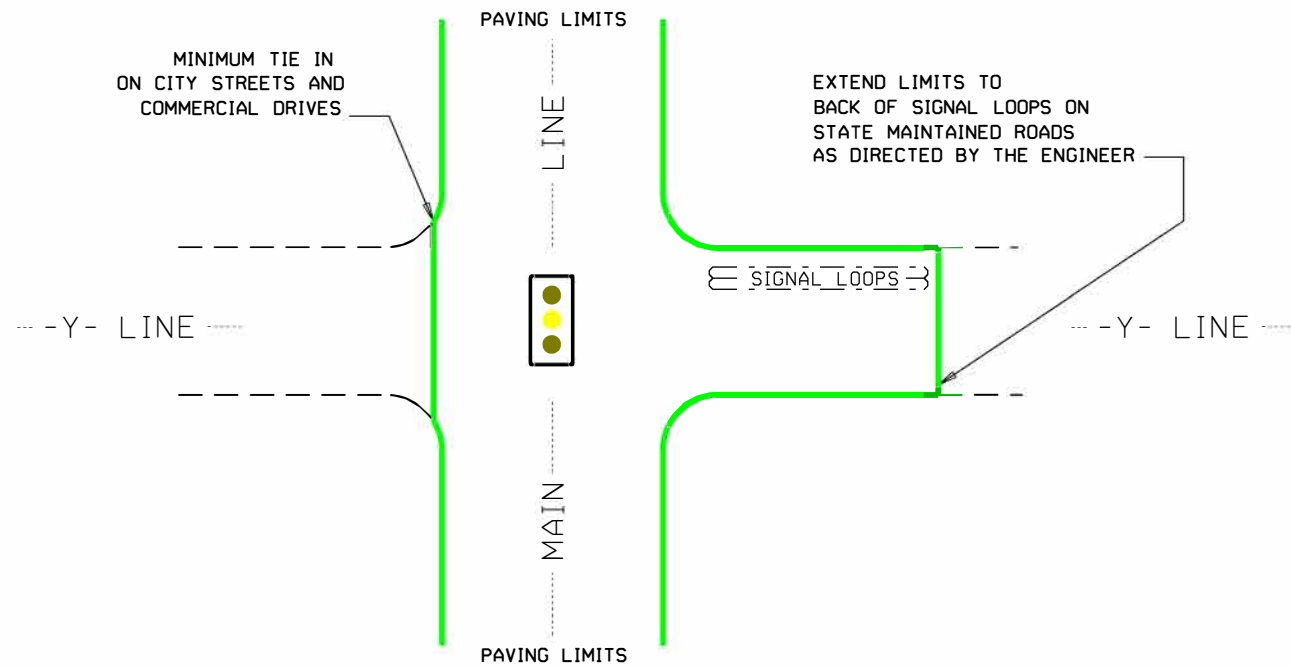
DETAIL 1

MAIN LINE MILLING

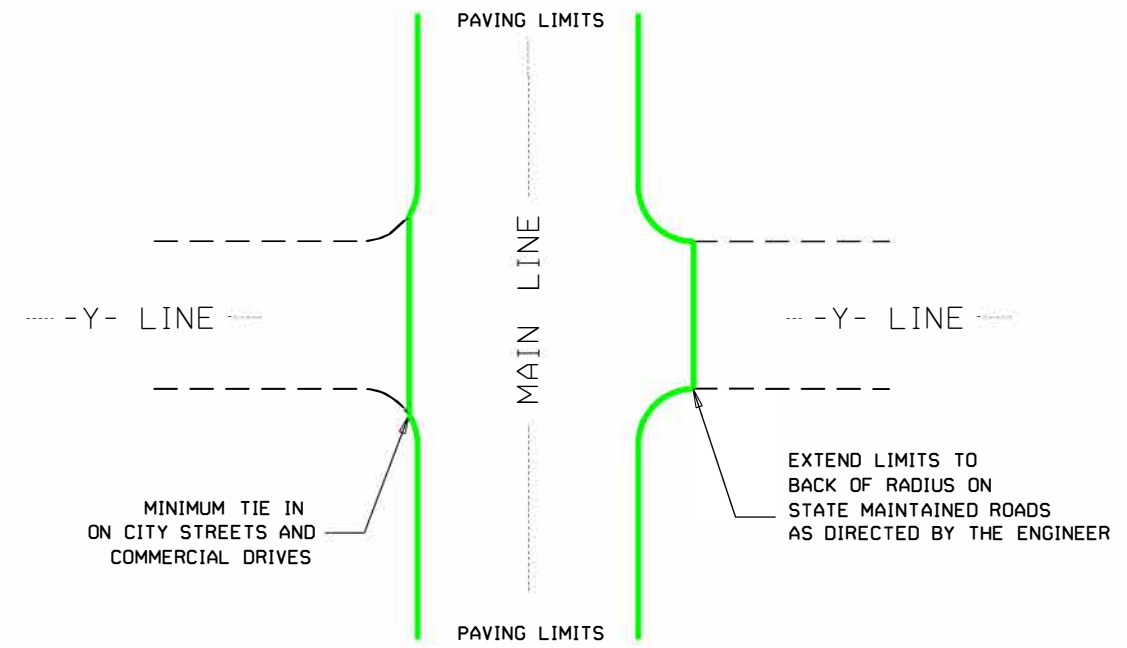
NOTE:

1. INCLUDES INCIDENTAL MILLING AT THE ENDS OF MAIN LINE SECTIONS, OR AS DIRECTED BY THE ENGINEER.
2. PAVE TO THE END OF THE MILLED SURFACE TO CREATE A SMOOTH TRANSITION.





TYPICAL DETAIL OF PROJECT LIMITS AT SIGNALIZED Y LINES



TYPICAL DETAIL OF PROJECT LIMITS AT UNSIGNALIZED Y LINES

ADDITIONAL INTERSECTIONS (NON-TYPICAL)

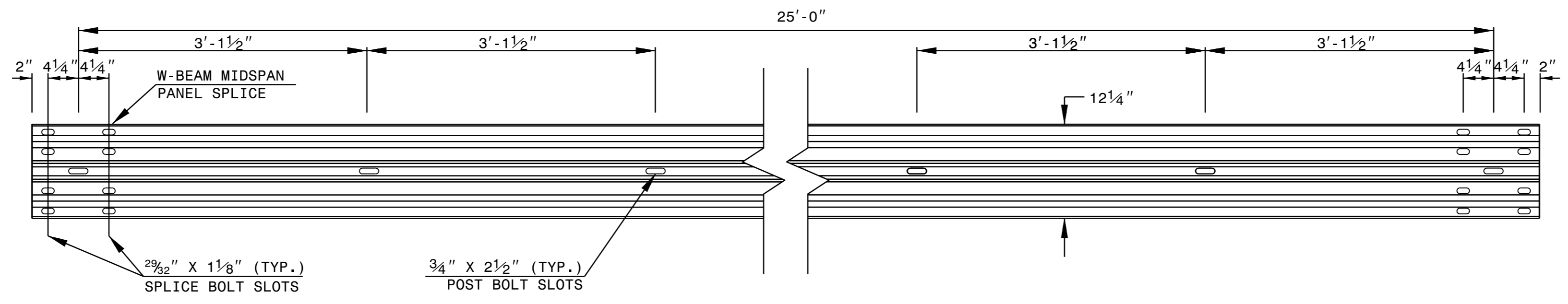
Extend paving limits to back of radius or loop on the following intersections:

MAP#	STREET NAME	COMMENTS
	PAVE ALL STATE OWNED & TOWN STREETS TO BACK OF RADIUS FOR THIS PROJECT	

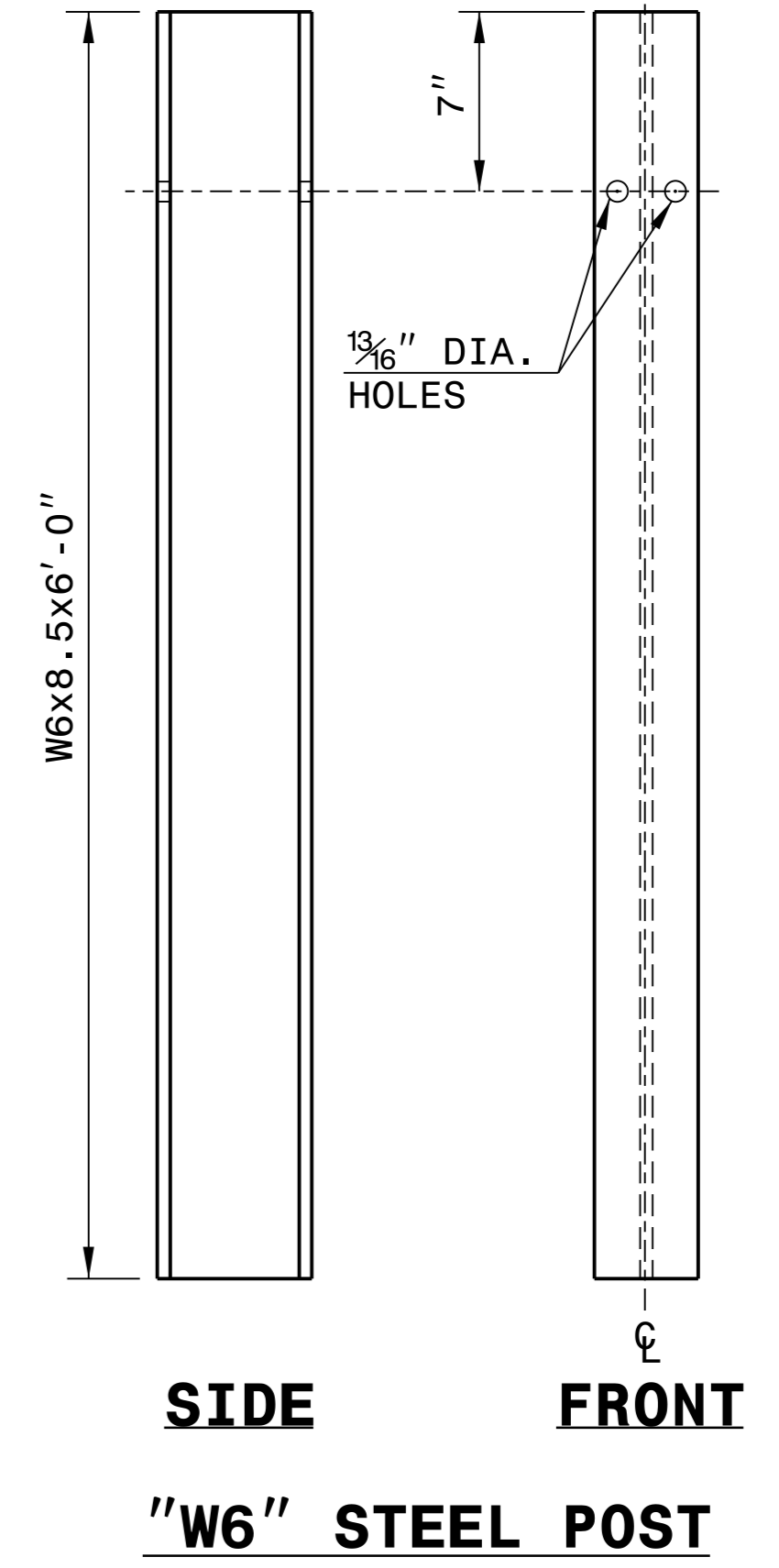
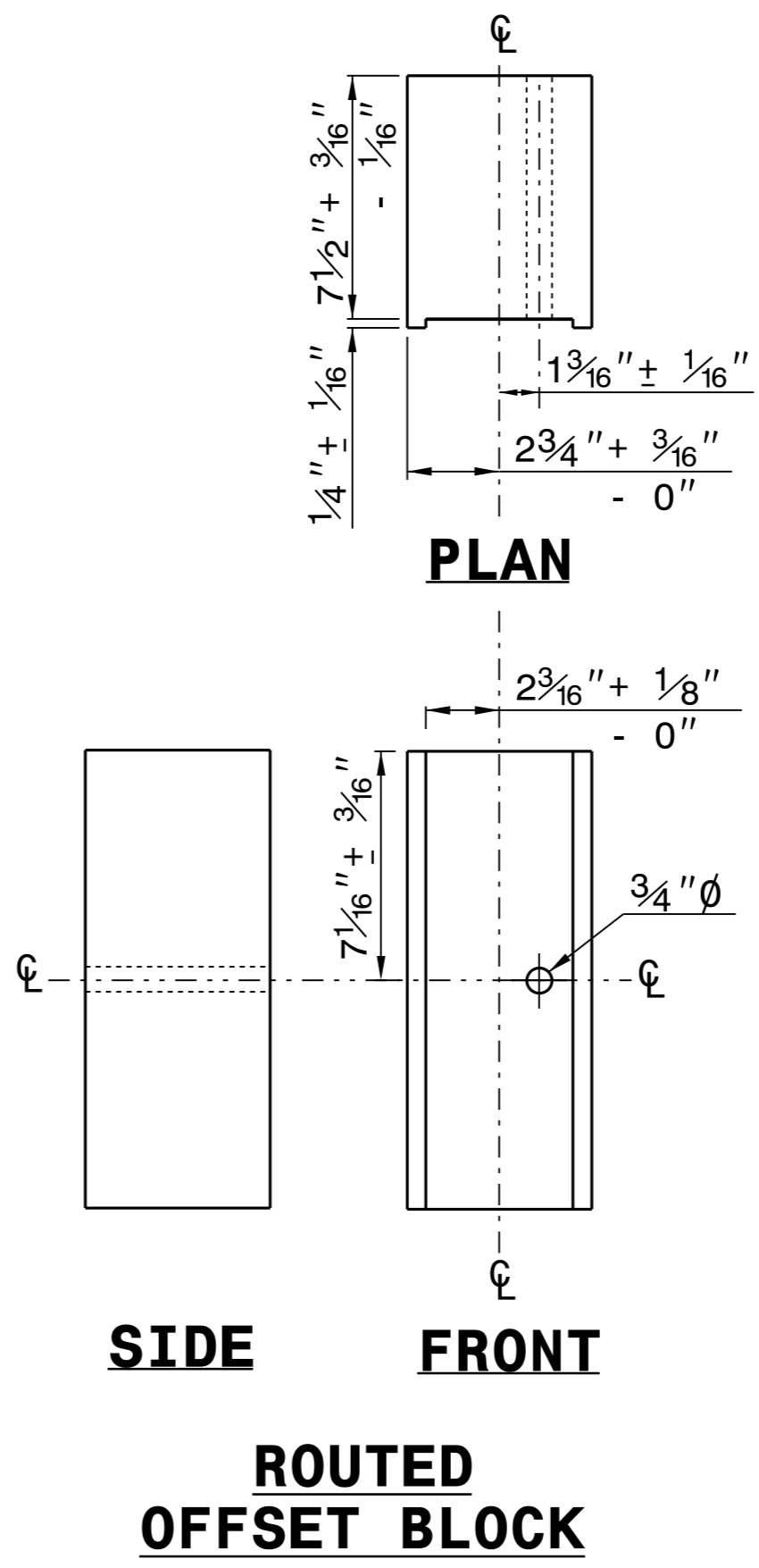
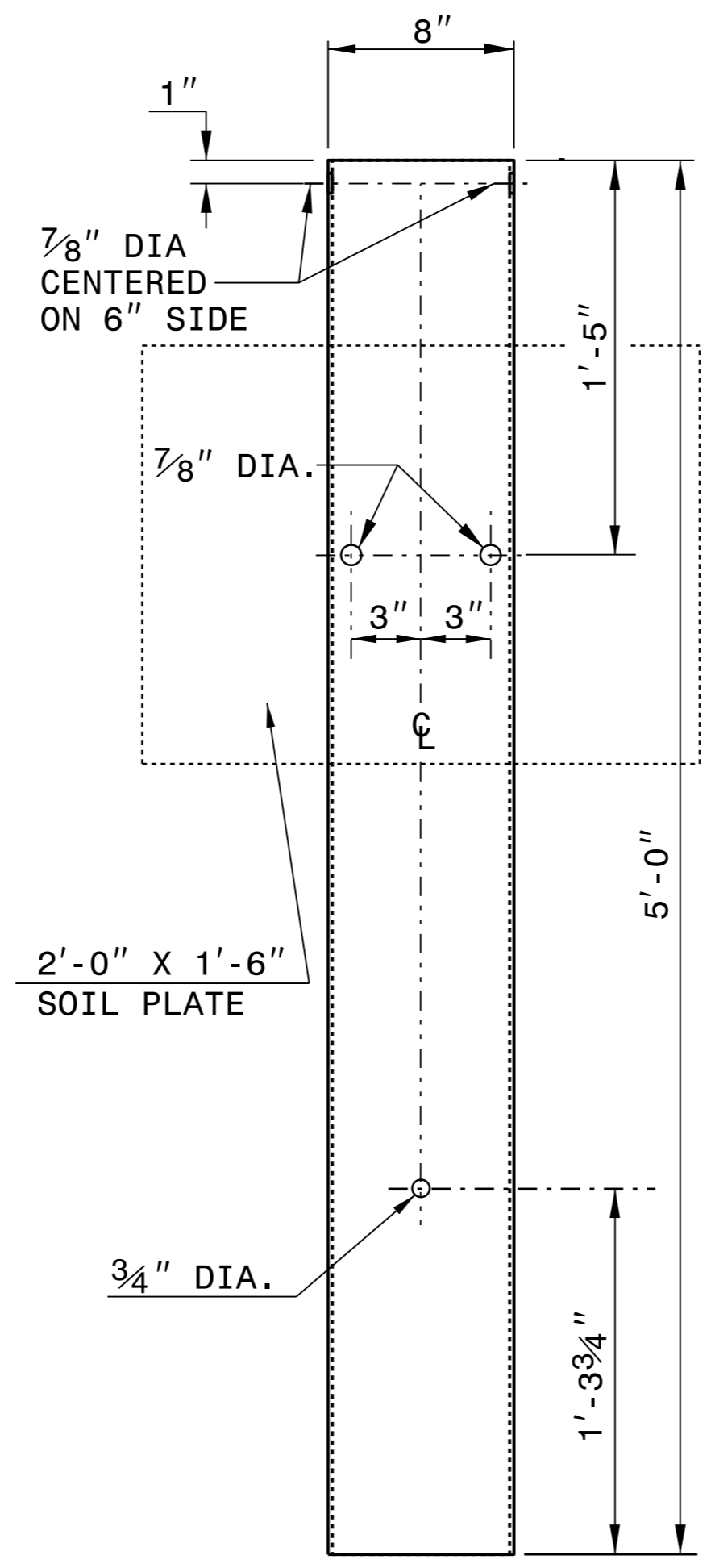
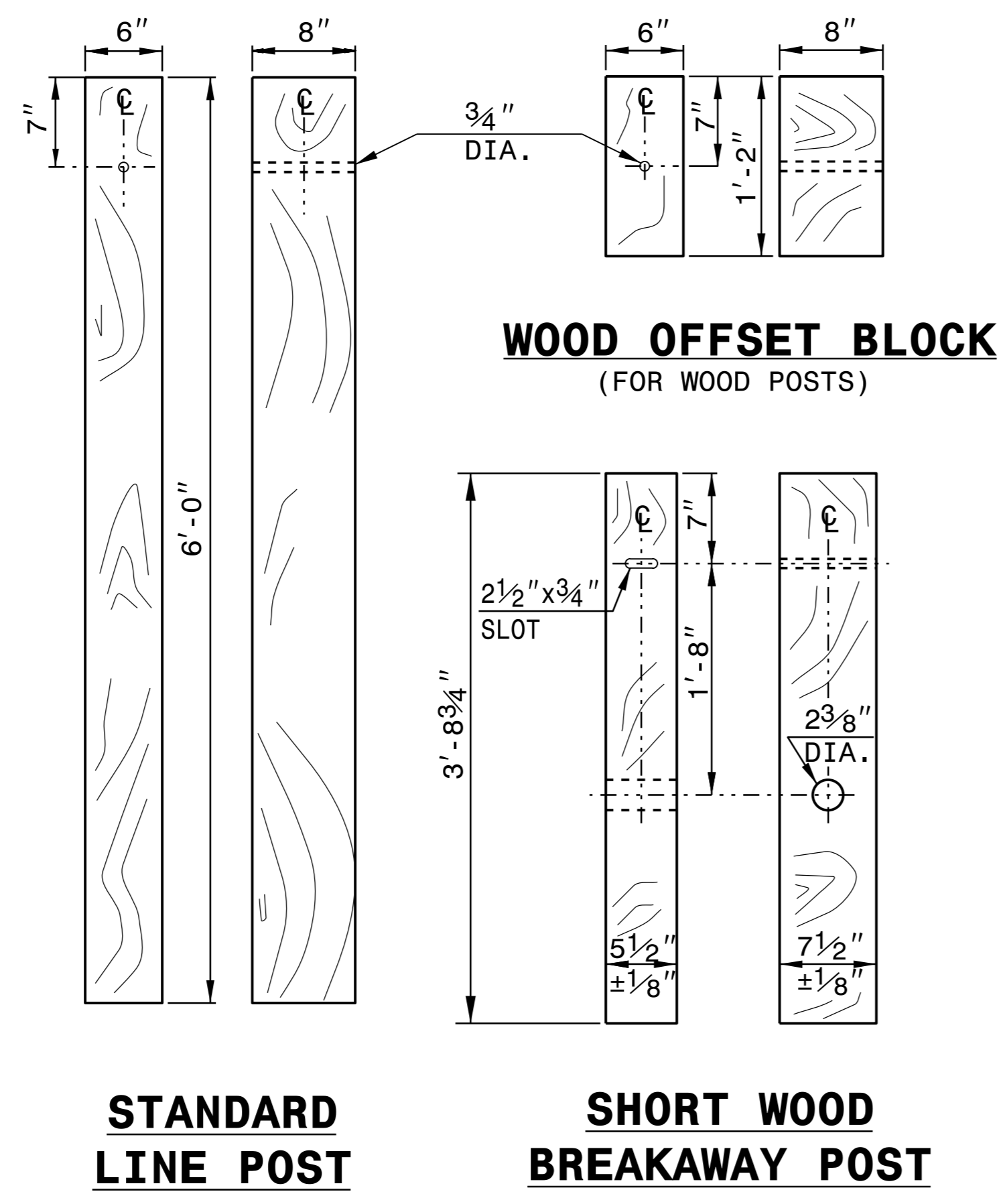
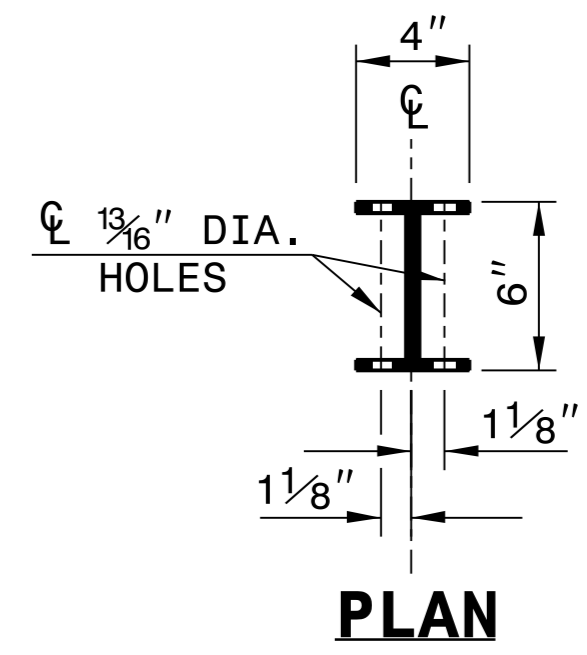
STATE OF NORTH CAROLINA
DEPT. OF TRANSPORTATION
DIVISION OF HIGHWAYS
RALEIGH, N.C.

ROADWAY DETAIL DRAWING FOR
GUARDRAIL INSTALLATION

SHEET 6 OF 8
862D02



STANDARD W-BEAM GUARDRAIL

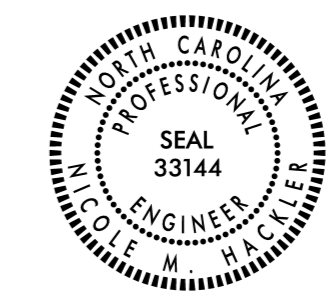


SYSTEM PARTS

STATE OF NORTH CAROLINA
DEPT. OF TRANSPORTATION
DIVISION OF HIGHWAYS
RALEIGH, N.C.

ROADWAY DETAIL DRAWING FOR
GUARDRAIL INSTALLATION

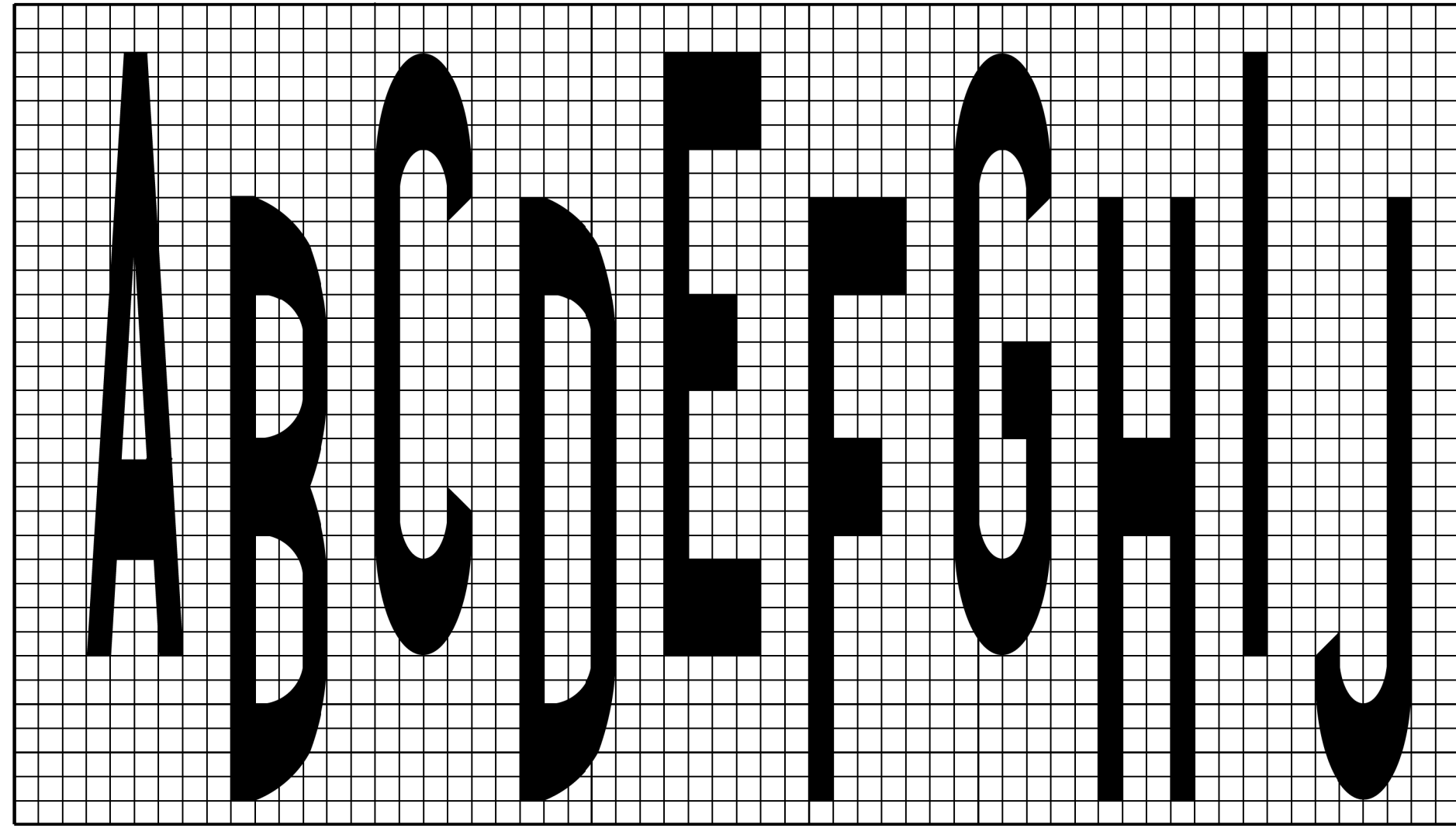
SHEET 6 OF 8
862D02



**CONTRACTS STANDARDS
AND DEVELOPMENT UNIT**
Office 919-707-6950 FAX 919-250-4119

SEE TITLE BLOCK

ORIGINAL BY: J.HOWERTON	DATE: 3-7-2018
MODIFIED BY:	DATE:
CHECKED BY:	DATE:
FILE SPEC.:	

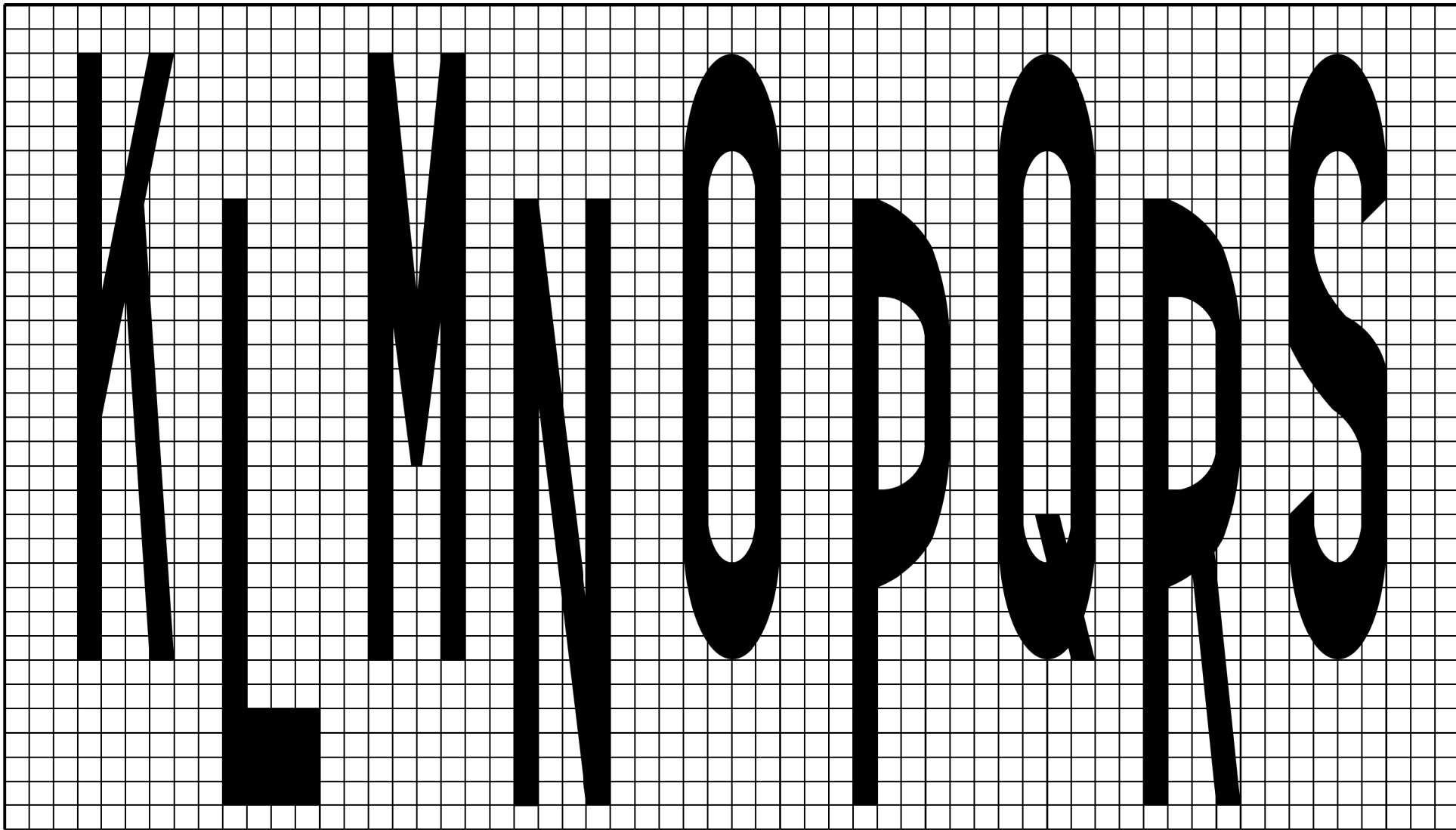


GENERAL NOTES:

- 1- STANDARD CHARACTERS ARE 25 GRID UNITS HIGH AND 4 UNITS WIDE (EXCEPT LETTER "I" AND THE NUMBER "1" WHICH ARE 1 UNIT WIDE).
- 2- VERTICAL STROKES ARE 1 UNIT WIDE, HORIZONTAL STROKES ARE 4 UNITS HIGH.
- 3- SPACE 1 UNIT (MIN.) BETWEEN CHARACTERS OR AS OTHERWISE SHOWN (OPTICAL SPACING MAY BE USED).
- 4- STANDARD CHARACTER HEIGHTS ARE 8'-4". EXCEPT FOR THE 6' RAILROAD 'R' SYMBOL AND THE TWO-LANE 10' SCHOOL SYMBOL.
- 5- FOR 8'-4" HIGH CHARACTERS, THE WIDTH IS 16" (USE 4" FOR EACH GRID SQUARE).
- 6- FOR 10' HIGH CHARACTERS, THE WIDTH IS 20" (USE 5" FOR EACH GRID SQUARE).
- 7- FOR 6' HIGH CHARACTERS, THE WIDTH IS 11½" (USE 2⅞" FOR EACH GRID SQUARE).

1-24 STATE OF
NORTH CAROLINA
DEPT. OF TRANSPORTATION
DIVISION OF HIGHWAYS
RALEIGH, N.C.

ROADWAY STANDARD DRAWING FOR
PAVEMENT MARKINGS
SYMBOLS AND WORD MESSAGES

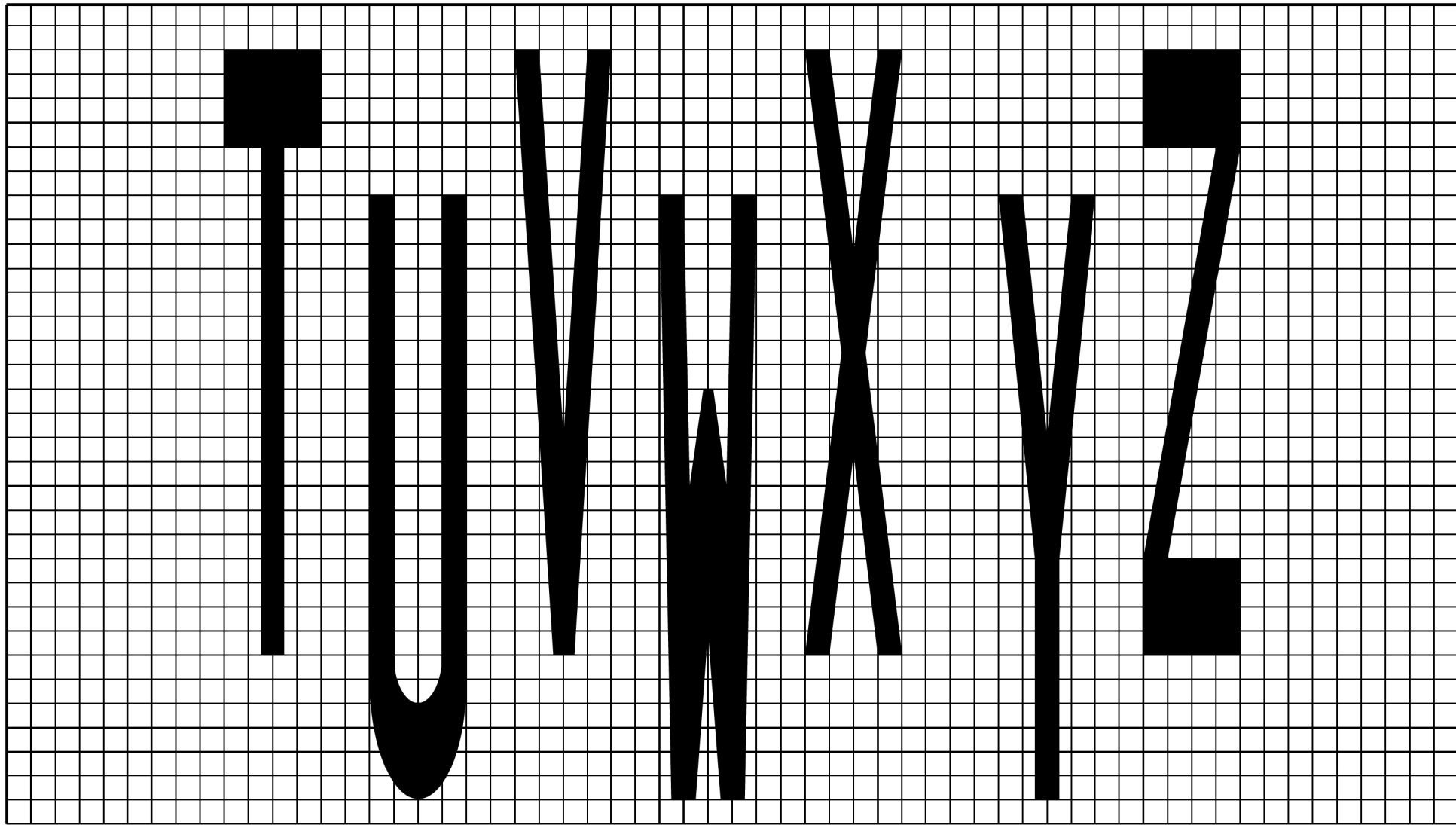


GENERAL NOTES:

- 1- STANDARD CHARACTERS ARE 25 GRID UNITS HIGH AND 4 UNITS WIDE (EXCEPT LETTER "I" AND THE NUMBER "1" WHICH ARE 1 UNIT WIDE).
- 2- VERTICAL STROKES ARE 1 UNIT WIDE, HORIZONTAL STROKES ARE 4 UNITS HIGH.
- 3- SPACE 1 UNIT (MIN.) BETWEEN CHARACTERS OR AS OTHERWISE SHOWN (OPTICAL SPACING MAY BE USED).
- 4- STANDARD CHARACTER HEIGHTS ARE 8'-4". EXCEPT FOR THE 6' RAILROAD 'R' SYMBOL AND THE TWO-LANE 10' SCHOOL SYMBOL.
- 5- FOR 8'-4" HIGH CHARACTERS, THE WIDTH IS 16" (USE 4" FOR EACH GRID SQUARE).
- 6- FOR 10' HIGH CHARACTERS, THE WIDTH IS 20" (USE 5" FOR EACH GRID SQUARE).
- 7- FOR 6' HIGH CHARACTERS, THE WIDTH IS 11½" (USE 2⅞" FOR EACH GRID SQUARE).

1-24 STATE OF
NORTH CAROLINA
DEPT. OF TRANSPORTATION
DIVISION OF HIGHWAYS
RALEIGH, N.C.

ROADWAY STANDARD DRAWING FOR
PAVEMENT MARKINGS
SYMBOLS AND WORD MESSAGES

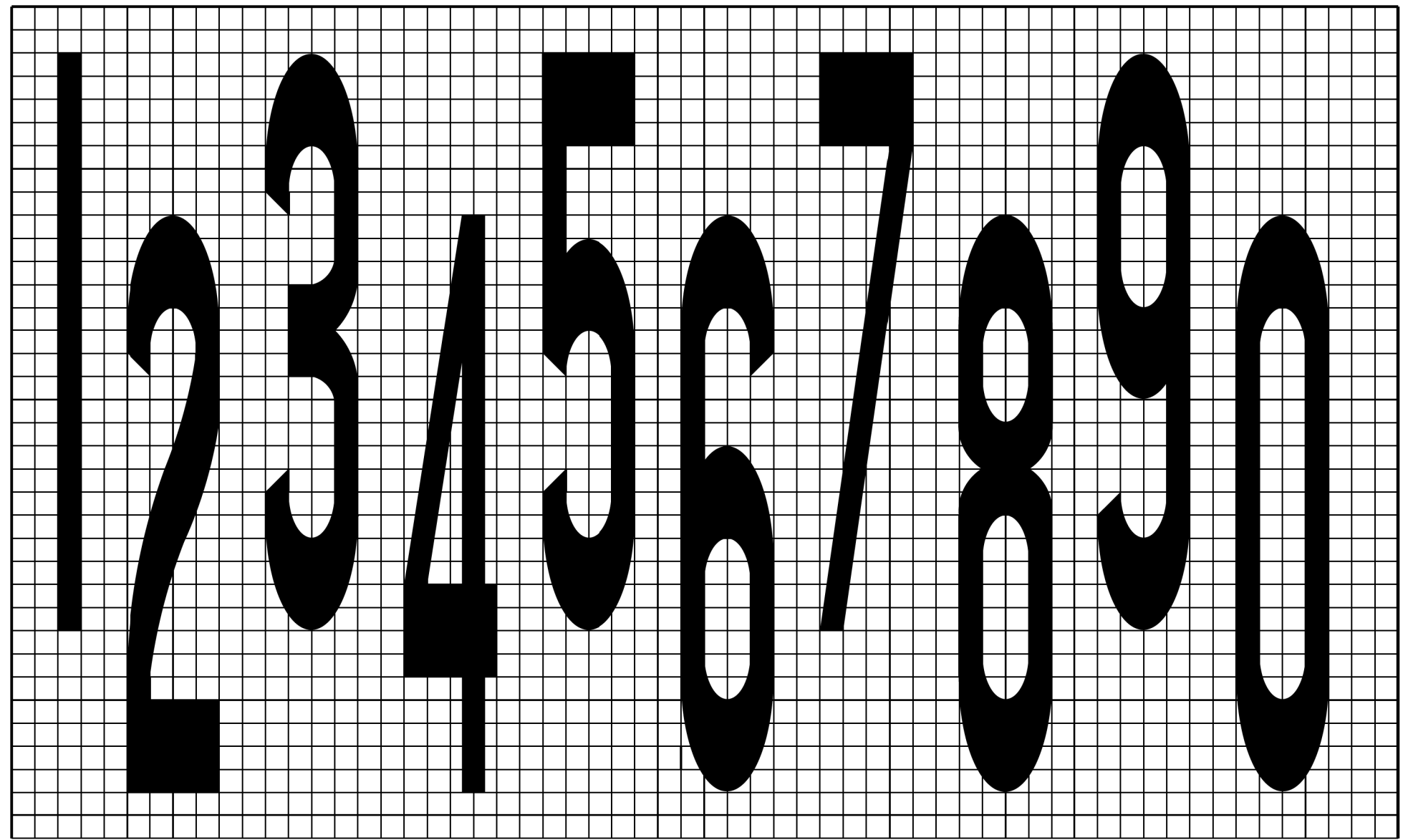


GENERAL NOTES:

- 1- STANDARD CHARACTERS ARE 25 GRID UNITS HIGH AND 4 UNITS WIDE (EXCEPT LETTER "I" AND THE NUMBER "1" WHICH ARE 1 UNIT WIDE).
- 2- VERTICAL STROKES ARE 1 UNIT WIDE, HORIZONTAL STROKES ARE 4 UNITS HIGH.
- 3- SPACE 1 UNIT (MIN.) BETWEEN CHARACTERS OR AS OTHERWISE SHOWN (OPTICAL SPACING MAY BE USED).
- 4- STANDARD CHARACTER HEIGHTS ARE 8'-4". EXCEPT FOR THE 6' RAILROAD 'R' SYMBOL AND THE TWO-LANE 10' SCHOOL SYMBOL.
- 5- FOR 8'-4" HIGH CHARACTERS, THE WIDTH IS 16" (USE 4" FOR EACH GRID SQUARE).
- 6- FOR 10' HIGH CHARACTERS, THE WIDTH IS 20" (USE 5" FOR EACH GRID SQUARE).
- 7- FOR 6' HIGH CHARACTERS, THE WIDTH IS 11½" (USE 2⅞" FOR EACH GRID SQUARE).

1-24 STATE OF
NORTH CAROLINA
DEPT. OF TRANSPORTATION
DIVISION OF HIGHWAYS
RALEIGH, N.C.

ROADWAY STANDARD DRAWING FOR
PAVEMENT MARKINGS
STANDARD ALPHABET AND SYMBOLS FOR
HIGHWAY PAVEMENT MARKING (USDOT-FHWA)



GENERAL NOTES:

- 1- STANDARD CHARACTERS ARE 25 GRID UNITS HIGH AND 4 UNITS WIDE (EXCEPT LETTER "I" AND THE NUMBER "1" WHICH ARE 1 UNIT WIDE).
- 2- VERTICAL STROKES ARE 1 UNIT WIDE, HORIZONTAL STROKES ARE 4 UNITS HIGH.
- 3- SPACE 1 UNIT (MIN.) BETWEEN CHARACTERS OR AS OTHERWISE SHOWN (OPTICAL SPACING MAY BE USED).
- 4- STANDARD CHARACTER HEIGHTS ARE 8'-4". EXCEPT FOR THE 6' RAILROAD 'R' SYMBOL AND THE TWO-LANE 10' SCHOOL SYMBOL.
- 5- FOR 8'-4" HIGH CHARACTERS, THE WIDTH IS 16" (USE 4" FOR EACH GRID SQUARE).
- 6- FOR 10' HIGH CHARACTERS, THE WIDTH IS 20" (USE 5" FOR EACH GRID SQUARE).
- 7- FOR 6' HIGH CHARACTERS, THE WIDTH IS 11½" (USE 2⅞" FOR EACH GRID SQUARE).

1-24 STATE OF
NORTH CAROLINA
DEPT. OF TRANSPORTATION
DIVISION OF HIGHWAYS
RALEIGH, N.C.

ROADWAY STANDARD DRAWING FOR
PAVEMENT MARKINGS
SYMBOLS AND WORD MESSAGES

PROJECT NO.	SHEET NO.	TOTAL NO.
2026CPT.01.17.10281, ETC.	18	

SUMMARY OF QUANTITIES

PROJECT NO	COUNTY	MAP NO	ROUTE	DESCRIPTION	TYP NO	LANES	LANE TYPE	LENGTH	WIDTH	BEGIN MP	END MP	0000100000-N	0106000000-E	1220000000-E	1245000000-E	1297000000-E	1330000000-E	1519000000-E	1520000000-E	1523000000-E	1524000000-E	1575000000-E	
												MOBILIZATION	BORROW EXCAVATION	INCIDENTAL STONE BASE	SHOULDER RECONSTRUCTION	MILLING ASPHALT PAVEMENT (1 1/2")	INCIDENTAL MILLING	ASPHALT CONC SURFACE COURSE, S9.5B	ASPHALT CONC LEVELING COURSE, S9.5B	ASPHALT CONC SURFACE COURSE, S9.5C	ASPHALT CONC LEVELING COURSE, S9.5C	ASP FOR PLANT MIX	
								MI	FT			LS	CY	TONS	SMI	SY	SY	TONS	TONS	TONS	TONS	TONS	
2026CPT.01.17.10281	Dare	1	NC-12 E	FROM HATTERAS FERRY DOCK TO NC12 INTERSECTION	1	6	MU	0.120	178	0.000	0.120	1					10,314	262		946		56	
2026CPT.01.17.10281	Dare	2	NC-12 E	FROM SR-1499 (COAST GUARD RD.) TO BRIDGE #63	2	2	2WU	0.550	55	0.000	0.550	*			1.10	15,090	802			1,398		82	
2026CPT.01.17.10281	Dare	3	NC-12 E	FROM BRIDGE #63 TO SR-1246 (AUSTIN RD.)	2	2	2WU	2.020	30	0.550	2.570	*		24	4.04	35,552	1,020			3,223	280	207	
2026CPT.01.17.10281	Dare	4	NC-12 E / NC 12 HWY	FROM SR-1246 (AUSTIN RD.) TO BILLY MITCHELL RD.	3	2	2WU	2.890	32	2.570	5.460	*		17		54,255	464			4,804		283	
2026CPT.01.17.10281	Dare	5	NC-12	FROM BILLY MITCHELL RD. TO SR 1482 BUCCANEER DR.	2	2	2WU	3.160	30	5.460	8.620	*		183	6.32	55,616	1,970			5,100		301	
TOTAL FOR PROJ NO. 2026CPT.01.17.10281								8.740				*		224	11.46	170,827	4,518			15,471	280	929	
2026CPT.01.17.20281	Dare	6	SR-1237 / KOHLER DR	FROM END MAINT TO NC 12	4	2	2WU	0.903	19	0.000	0.903	*	72	70	1.81		686	878				58	
2026CPT.01.17.20281	Dare	7	SR-1238 / ALTONA LN	FROM DEAD END TO SR 1237-KOHLER DR.	4	2	2WU	0.160	13	0.000	0.160	*	13	17	0.32			107				8	
2026CPT.01.17.20281	Dare	8	SR-1239 / KOHLER DR	FROM SR 1237-KOHLER DR. TO NC 12	5	2	2WU	0.022	20	0.000	0.022	*				269	120	33				2	
2026CPT.01.17.20281	Dare	9	SR-1248 / ISLINGTON CT	FROM DEAD END TO NC 12	4	2	2WU	0.120	14	0.000	0.120	*	10	6	0.24			86				6	
2026CPT.01.17.20281	Dare	10	SR-1253 / PRICILLA CURVE RD	FROM DEAD END TO SR 1237-KOHLER RD.	4	2	2WU	0.183	17	0.000	0.183	*	15	9	0.37			159				10	
2026CPT.01.17.20281	Dare	11	SR-1255 / M V AUSTRALIA LN	FROM DEAD END TO SR 1238-ALTONA LANE	4	2	2WU	0.151	16	0.000	0.151	*	12	12	0.30			124				8	
2026CPT.01.17.20281	Dare	12	SR-1258 / FULCHER LN	FROM DEAD END TO NC 12	4	2	2WU	0.208	18	0.000	0.208	*	17	15	0.42			192				13	
2026CPT.01.17.20281	Dare	13	SR-1266 / WALTHAM LN	FROM DEAD END TO NC 12	4	2	2WU	0.110	19	0.000	0.110	*	9	7	0.22			107				8	
2026CPT.01.17.20281	Dare	14	SR-1294 / BAY SIDE CT	FROM DEAD END TO SR 1295-PARADISE DRIVE	4	2	2WU	0.178	20	0.000	0.178	*	14	8	0.36			210				17	
2026CPT.01.17.20281	Dare	15	SR-1295 / PARADISE DR	FROM SR 1296-UTOPIA LANE TO NC 12	4	2	2WU	0.150	21	0.000	0.150	*	12	5	0.30			161				11	
2026CPT.01.17.20281	Dare	16	SR-1296 / UTOPIA LN	FROM DEAD END TO SR 1293-SEABREEZE DRIVE	4	2	2WU	0.036	20	0.000	0.036	*	3	5	0.07			37				3	
2026CPT.01.17.20281	Dare	17	SR-1298 / LASSITER LN	FROM DEAD END TO NC 12	4	2	2WU	0.186	18	0.000	0.186	*	15	6	0.37			171	3			13	
2026CPT.01.17.20281	Dare	18	SR-1310 / FLAMBEAU RD	FROM SR 1241-EAGLE PASS RD. TO SR 1311-LIGHTHOUSE RD.	4	2	2WU	0.290	20	0.000	0.290	*	23	10	0.58			297				21	
2026CPT.01.17.20281	Dare	19	SR-1311 / LIGHTHOUSE RD	FROM SR 1310-FLAMBEAU RD. TO SR 1312-SEA SCAPE RD.	4	2	2WU	0.058	19	0.000	0.058	*	5		0.12			56				4	
2026CPT.01.17.20281	Dare	20	SR-1312 / SEA SCAPE LN	FROM DEAD END TO SR 1311-LIGHTHOUSE RD.	4	2	2WU	0.121	20	0.000	0.121	*	10		0.24			124				8	
2026CPT.01.17.20281	Dare	21	SR-1340 / SAXON CUT DR	FROM MARLIN CLUB TO SR 1237-KOHLER RD.	4	2	2WU	0.120	17	0.000	0.120	*	10	16	0.24		92	104				7	
2026CPT.01.17.20281	Dare	22	SR-1426 / FREEBOOTER CT	FROM CDS TO SR 1400-BUCCANEER DR.	4	2	2WU	0.255	18	0.000	0.255	*	20	12	0.51			235				18	
2026CPT.01.17.20281	Dare	23	SR-1430 / PAMLICO DR	FROM CDS TO SR 1272-ELIZABETH AVE.	4	2	2WU	0.088	20	0.000	0.088	*	7		0.18			90				7	
2026CPT.01.17.20281	Dare	24	SR-1451 / BLACKBEARDS CT	FROM CDS TO SR 1400-BUCCANEER DR.	4	2	2WU	0.270	18	0.000	0.270	*	22	6	0.54			249				20	
2026CPT.01.17.20281	Dare	25	SR-1468 / RUNBOAT CIR	FROM NC 12 TO NC 12	4	2	2WU	0.460	20	0.000	0.460	*	37	1	0.92			470				32	
TOTAL FOR PROJ NO. 2026CPT.01.17.20281								4.069				*	326	205	8.10	269	898	3,890	3			274	
2026CPT.01.17.20282	Dare	26	SR-1236 / C DEERING RIDGE RD	FROM DEAD END TO NC 12	6	2	2WU	0.379	17	0.000	0.379	*		17				275				18	
2026CPT.01.17.20282	Dare	27	SR-1276 / WOODALL WAY	FROM SR 1511-SEA VIEW DR. TO NC 12	6	2	2WU	0.307	19	0.000	0.307	*		13				248				16	
2026CPT.01.17.20282	Dare	28	SR-1499 / COAST GUARD RD	FROM EOM TO EOM	6	2	2WU	0.159	23	0.000	0.159	*						156				10	
2026CPT.01.17.20282	Dare	29	SR-1505 / SUTTON PL	FROM DEAD END TO SR 1276-WOODALL WAY	6	2	2WU	0.111	19	0.000	0.111	*						90				6	
2026CPT.01.17.20282	Dare	30	SR-1511 / SEA VIEW DR	FROM SR 1276 (WOODALL WAY) TO CDS	6	2	2WU	0.115	19	0.000	0.115	*		4				114				7	
2026CPT.01.17.20282	Dare	31	SR-1526 / CEDAR CT	FROM NC 12 TO CDS	6	2	2WU	0.070	19	0.000	0.070	*		4				57				4	
2026CPT.01.17.20282	Dare	32	SR-1554 / EMPIRE GEM LN	FROM DEAD END TO SR 1276-WOODALL WAY	6	2	2WU	0.123	14	0.000	0.123	*						73				5	
TOTAL FOR PROJ NO. 2026CPT.01.17.20282								1.264				*		38					1,013				66
GRAND TOTAL								14.073				1	326	467	19.56	171,096	5,416	4,903	3	15,471	280	1,269	

PROJECT NO.	SHEET NO.	TOTAL NO.
2026CPT.01.17.10281, ETC.	19	

SUMMARY OF QUANTITIES CONTINUED

PROJECT NO	COUNTY	MAP NO	ROUTE	DESCRIPTION	TYP NO	LANES	LANE TYPE	LENGTH	WIDTH	BEGIN MP	END MP	1705000000-E	2845000000-N	3030000000-E	3210000000-N	3288000000-N	3319000000-N	3360000000-E	4895000000-E	6084000000-E	6117000000-N		
												PATCHING EXISTING PAVEMENT (FULL DEPTH)	ADJ METER OR VALVE BOXES	ADJUSTMENT OF METER OR VALVE BOXES	STEEL BEAM GR	GR ANCH CAT-1	GUARDRAIL END UNITS, TYPE TL-2	GUARDRAIL ANCHOR UNITS, TYPE B-83	REM EXT GRDRL	GENERIC PAVEMENT MARKING ITEM (POLYCARBONATE H-SHAPED MARKERS)	SEEDING & MULCHING	RESPONSE FOR EROSION CONTROL	
								MI	FT			TONS	EA	EA	LF	EA	EACH	EA	LF	EA	ACR	EA	
2026CPT.01.17.10281	Dare	1	NC-12 E	FROM HATTERAS FERRY DOCK TO NC12 INTERSECTION	1	6	MU	0.120	178	0.000	0.120												
2026CPT.01.17.10281	Dare	2	NC-12 E	FROM SR-1499 (COAST GUARD RD.) TO BRIDGE #63	2	2	2WU	0.550	55	0.000	0.550									37.00	0.5	1	
2026CPT.01.17.10281	Dare	3	NC-12 E	FROM BRIDGE #63 TO SR-1246 (AUSTIN RD.)	2	2	2WU	2.020	30	0.550	2.570		1	50.00	1.00	3.00	4	275.00	134.00	3.9	1		
2026CPT.01.17.10281	Dare	4	NC-12 E / NC 12 HWY	FROM SR-1246 (AUSTIN RD.) TO BILLY MITCHELL RD.	3	2	2WU	2.890	32	2.570	5.460		2							191.00			
2026CPT.01.17.10281	Dare	5	NC-12	FROM BILLY MITCHELL RD. TO SR 1482 BUCCANEER DR.	2	2	2WU	3.160	30	5.460	8.620	6	7							209.00			
TOTAL FOR PROJ NO. 2026CPT.01.17.10281								8.740				6	10	50.00	1.00	3.00	4	275.00	571.00	4.4	2		
2026CPT.01.17.20281	Dare	6	SR-1237 / KOHLER DR	FROM END MAINT TO NC 12	4	2	2WU	0.903	19	0.000	0.903	10									0.9	1	
2026CPT.01.17.20281	Dare	7	SR-1238 / ALTONA LN	FROM DEAD END TO SR 1237-KOHLER DR.	4	2	2WU	0.160	13	0.000	0.160	17									0.2		
2026CPT.01.17.20281	Dare	8	SR-1239 / KOHLER DR	FROM SR 1237-KOHLER DR. TO NC 12	5	2	2WU	0.022	20	0.000	0.022												
2026CPT.01.17.20281	Dare	9	SR-1248 / ISLINGTON CT	FROM DEAD END TO NC 12	4	2	2WU	0.120	14	0.000	0.120	15									0.1		
2026CPT.01.17.20281	Dare	10	SR-1253 / PRICILLA CURVE RD	FROM DEAD END TO SR 1237-KOHLER RD.	4	2	2WU	0.183	17	0.000	0.183	3									0.2		
2026CPT.01.17.20281	Dare	11	SR-1255 / M V AUSTRALIA LN	FROM DEAD END TO SR 1238-ALTONA LANE	4	2	2WU	0.151	16	0.000	0.151	9									0.1		
2026CPT.01.17.20281	Dare	12	SR-1258 / FULCHER LN	FROM DEAD END TO NC 12	4	2	2WU	0.208	18	0.000	0.208	21									0.2		
2026CPT.01.17.20281	Dare	13	SR-1266 / WALTHAM LN	FROM DEAD END TO NC 12	4	2	2WU	0.110	19	0.000	0.110	26									0.1		
2026CPT.01.17.20281	Dare	14	SR-1294 / BAY SIDE CT	FROM DEAD END TO SR 1295-PARADISE DRIVE	4	2	2WU	0.178	20	0.000	0.178	63									0.2		
2026CPT.01.17.20281	Dare	15	SR-1295 / PARADISE DR	FROM SR 1296-UTOPIA LANE TO NC 12	4	2	2WU	0.150	21	0.000	0.150	6									0.1		
2026CPT.01.17.20281	Dare	16	SR-1296 / UTOPIA LN	FROM DEAD END TO SR 1293-SEABREEZE DRIVE	4	2	2WU	0.036	20	0.000	0.036	22									0.0		
2026CPT.01.17.20281	Dare	17	SR-1298 / LASSITER LN	FROM DEAD END TO NC 12	4	2	2WU	0.186	18	0.000	0.186	39									0.2		
2026CPT.01.17.20281	Dare	18	SR-1310 / FLAMBEAU RD	FROM SR 1241-EAGLE PASS RD. TO SR 1311-LIGHTHOUSE RD.	4	2	2WU	0.290	20	0.000	0.290	42									0.3		
2026CPT.01.17.20281	Dare	19	SR-1311 / LIGHTHOUSE RD	FROM SR 1310-FLAMBEAU RD. TO SR 1312-SEA SCAPE RD.	4	2	2WU	0.058	19	0.000	0.058										0.1		
2026CPT.01.17.20281	Dare	20	SR-1312 / SEA SCAPE LN	FROM DEAD END TO SR 1311-LIGHTHOUSE RD.	4	2	2WU	0.121	20	0.000	0.121	8									0.1		
2026CPT.01.17.20281	Dare	21	SR-1340 / SAXON CUT DR	FROM MARLIN CLUB TO SR 1237-KOHLER RD.	4	2	2WU	0.120	17	0.000	0.120	5									0.1		
2026CPT.01.17.20281	Dare	22	SR-1426 / FREEBOOTER CT	FROM CDS TO SR 1400-BUCCANEER DR.	4	2	2WU	0.255	18	0.000	0.255	50									0.2		
2026CPT.01.17.20281	Dare	23	SR-1430 / PAMLICO DR	FROM CDS TO SR 1272-ELIZABETH AVE.	4	2	2WU	0.088	20	0.000	0.088	22									0.1		
2026CPT.01.17.20281	Dare	24	SR-1451 / BLACKBEARDS CT	FROM CDS TO SR 1400-BUCCANEER DR.	4	2	2WU	0.270	18	0.000	0.270	70									0.3		
2026CPT.01.17.20281	Dare	25	SR-1468 / RUNBOAT CIR	FROM NC 12 TO NC 12	4	2	2WU	0.460	20	0.000	0.460	20									0.4		
TOTAL FOR PROJ NO. 2026CPT.01.17.20281								4.069				448	1								3.9	1	
2026CPT.01.17.20282	Dare	26	SR-1236 / C DEERING RIDGE RD	FROM DEAD END TO NC 12	6	2	2WU	0.379	17	0.000	0.379												
2026CPT.01.17.20282	Dare	27	SR-1276 / WOODALL WAY	FROM SR 1511-SEA VIEW DR. TO NC 12	6	2	2WU	0.307	19	0.000	0.307												
2026CPT.01.17.20282	Dare	28	SR-1499 / COAST GUARD RD	FROM EOM TO EOM	6	2	2WU	0.159	23	0.000	0.159		4										
2026CPT.01.17.20282	Dare	29	SR-1505 / SUTTON PL	FROM DEAD END TO SR 1276-WOODALL WAY	6	2	2WU	0.111	19	0.000	0.111												
2026CPT.01.17.20282	Dare	30	SR-1511 / SEA VIEW DR	FROM SR 1276 (WOODALL WAY) TO CDS	6	2	2WU	0.115	19	0.000	0.115												
2026CPT.01.17.20282	Dare	31	SR-1526 / CEDAR CT	FROM NC 12 TO CDS	6	2	2WU	0.070	19	0.000	0.070												
2026CPT.01.17.20282	Dare	32	SR-1554 / EMPIRE GEM LN	FROM DEAD END TO SR 1276-WOODALL WAY	6	2	2WU	0.123	14	0.000	0.123												
TOTAL FOR PROJ NO. 2026CPT.01.17.20282								1.264					4										
GRAND TOTAL								14.073				454	10	5	50.00	1.00	3.00	4	275.00	571.00	8.3	3	

PROJECT NO.	SHEET NO.	TOTAL NO.
2026CPT.01.17.10281, ETC.	22	

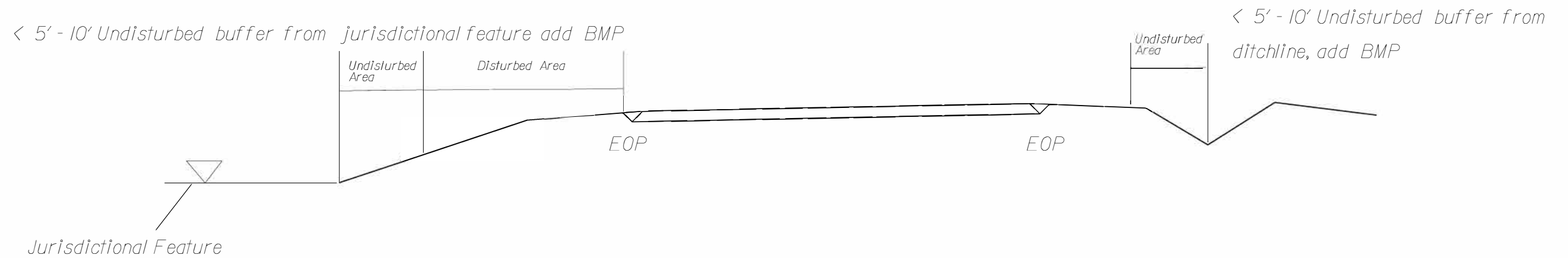
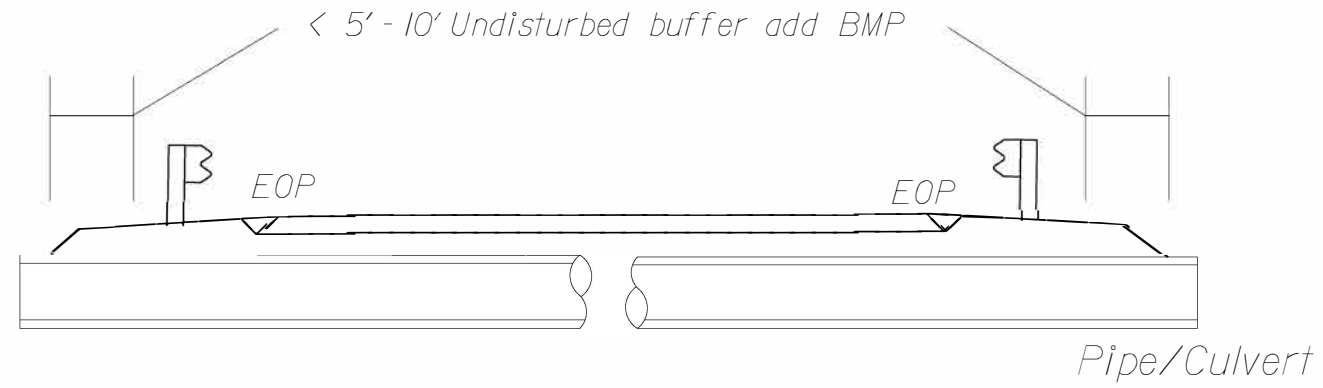
THERMOPLASTIC AND PAINT QUANTITIES CONTINUED

PROJECT NO	COUNTY	MAP NO	ROUTE	DESCRIPTION	TYP NO	LANES	LANE TYPE	LENGTH	WIDTH	BEGIN MP	END MP	484000000-E										484500000-N							
												PAINT PAVEMENT MARKING CHARACTER (MSG 4)	PAINT PAVEMENT MARKING CHARACTER (MSG 5)	PAINT PAVEMENT MARKING CHARACTER (MSG 6)	PAINT PAVEMENT MARKING CHARACTER (MSG 7)	PAINT PAVEMENT MARKING CHARACTER (MSG 8)	PAINT PAVEMENT MARKING CHARACTER (MSG P)	PAINT PAVEMENT MARKING CHARACTER (MSG TRAFFIC)	PAINT PAVEMENT MARKING CHARACTER (MSG FERRY)	PAINT PAVEMENT MARKING CHARACTER (MSG PRIORITY)	PAINT PAVEMENT MARKING CHARACTER (MSG CAR FERRY)	PAINT PAVEMENT MARKING CHARACTER (MSG WALK ON FERRY)	PAINT PAVEMENT MARKING CHARACTER (MSG BEACH)	PAINT PAVEMENT MARKING SYMBOL (STR ARROW)	PAINT PAVEMENT MARKING SYMBOL (RT ARROW)	PAINT PAVEMENT MARKING SYMBOL (STR & LT ARROW)	PAINT PAVEMENT MARKING SYMBOL (STR & RT ARROW)		
												EA	EA	EA	EA	EA	EA	EA	EA	EA	EA	EA	EA	EA	EA	EA	EA	EA	
2026CPT.01.17.10281	Dare	1	NC-12 E	FROM HATTERAS FERRY DOCK TO NC12 INTERSECTION	1	6	MU	0.12	178	0	0.12	3	3	3	3	3	1	14	5	8	8	11	5	EA	EA	EA	EA		
2026CPT.01.17.10281	Dare	2	NC-12 E	FROM SR-1499 (COAST GUARD RD.) TO BRIDGE #63	2	2	2WU	0.55	55	0	0.55										8	11	5	EA	EA	EA	EA		
2026CPT.01.17.10281	Dare	3	NC-12 E	FROM BRIDGE #63 TO SR-1246 (AUSTIN RD.)	2	2	2WU	2.02	30	0.55	2.57													EA	EA	EA	EA		
2026CPT.01.17.10281	Dare	4	NC-12 E / NC 12 HWY	FROM SR-1246 (AUSTIN RD.) TO BILLY MITCHELL RD.	3	2	2WU	2.89	32	2.57	5.46													EA	EA	EA	EA		
2026CPT.01.17.10281	Dare	5	NC-12	FROM BILLY MITCHELL RD. TO SR 1482 BUCCANEER DR.	2	2	2WU	3.16	30	5.46	8.62													EA	EA	EA	EA		
TOTAL FOR PROJ NO. 2026CPT.01.17.10281								8.74				3	3	3	3	3	1	14	5	8	8	11	5	3	1	8	2	2	
2026CPT.01.17.20281	Dare	6	SR-1237 / KOHLER DR	FROM END MAINT TO NC 12	4	2	2WU	0.903	19	0	0.903																		
2026CPT.01.17.20281	Dare	7	SR-1238 / ALTONA LN	FROM DEAD END TO SR 1237-KOHLER DR.	4	2	2WU	0.16	13	0	0.16																		
2026CPT.01.17.20281	Dare	8	SR-1239 / KOHLER DR	FROM SR 1237-KOHLER DR. TO NC 12	5	2	2WU	0.022	20	0	0.022																		
2026CPT.01.17.20281	Dare	9	SR-1248 / ISLINGTON CT	FROM DEAD END TO NC 12	4	2	2WU	0.12	14	0	0.12																		
2026CPT.01.17.20281	Dare	10	SR-1253 / PRICILLA CURVE RD	FROM DEAD END TO SR 1237-KOHLER RD.	4	2	2WU	0.183	17	0	0.183																		
2026CPT.01.17.20281	Dare	11	SR-1255 / M V AUSTRALIA LN	FROM DEAD END TO SR 1238-ALTONA LANE	4	2	2WU	0.151	16	0	0.151																		
2026CPT.01.17.20281	Dare	12	SR-1258 / FULCHER LN	FROM DEAD END TO NC 12	4	2	2WU	0.208	18	0	0.208																		
2026CPT.01.17.20281	Dare	13	SR-1266 / WALTHAM LN	FROM DEAD END TO NC 12	4	2	2WU	0.11	19	0	0.11																		
2026CPT.01.17.20281	Dare	14	SR-1294 / BAY SIDE CT	FROM DEAD END TO SR 1295-PARADISE DRIVE	4	2	2WU	0.178	20	0	0.178																		
2026CPT.01.17.20281	Dare	15	SR-1295 / PARADISE DR	FROM SR 1296-UTOPIA LANE TO NC 12	4	2	2WU	0.15	21	0	0.15																		
2026CPT.01.17.20281	Dare	16	SR-1296 / UTOPIA LN	FROM DEAD END TO SR 1293-SEABREEZE DRIVE	4	2	2WU	0.036	20	0	0.036																		
2026CPT.01.17.20281	Dare	17	SR-1298 / LASSITER LN	FROM DEAD END TO NC 12	4	2	2WU	0.186	18	0	0.186																		
2026CPT.01.17.20281	Dare	18	SR-1310 / FLAMBEAU RD	FROM SR 1241-EAGLE PASS RD. TO SR 1311-LIGHTHOUSE RD.	4	2	2WU	0.29	20	0	0.29																		
2026CPT.01.17.20281	Dare	19	SR-1311 / LIGHTHOUSE RD	FROM SR 1310-FLAMBEAU RD. TO SR 1312-SEA SCAPE RD.	4	2	2WU	0.058	19	0	0.058																		
2026CPT.01.17.20281	Dare	20	SR-1312 / SEA SCAPE LN	FROM DEAD END TO SR 1311-LIGHTHOUSE RD.	4	2	2WU	0.121	20	0	0.121																		
2026CPT.01.17.20281	Dare	21	SR-1340 / SAXON CUT DR	FROM MARLIN CLUB TO SR 1237-KOHLER RD.	4	2	2WU	0.12	17	0	0.12																		
2026CPT.01.17.20281	Dare	22	SR-1426 / FREEBOOTER CT	FROM CDS TO SR 1400-BUCCANEER DR.	4	2	2WU	0.255	18	0	0.255																		
2026CPT.01.17.20281	Dare	23	SR-1430 / PAMLICO DR	FROM CDS TO SR 1272-ELIZABETH AVE.	4	2	2WU	0.088	20	0	0.088																		
2026CPT.01.17.20281	Dare	24	SR-1451 / BLACKBEARDS CT	FROM CDS TO SR 1400-BUCCANEER DR.	4	2	2WU	0.27	18	0	0.27																		
2026CPT.01.17.20281	Dare	25	SR-1468 / RUNBOAT CIR	FROM NC 12 TO NC 12	4	2	2WU	0.46	20	0	0.46																		
TOTAL FOR PROJ NO. 2026CPT.01.17.20281								4.069																					
2026CPT.01.17.20282	Dare	26	SR-1236 / C DEERING RIDGE RD	FROM DEAD END TO NC 12	6	2	2WU	0.379	17	0	0.379																		
2026CPT.01.17.20282	Dare	27	SR-1276 / WOODALL WAY	FROM SR 1511-SEA VIEW DR. TO NC 12	6	2	2WU	0.307	19	0	0.307																		
2026CPT.01.17.20282	Dare	28	SR-1499 / COAST GUARD RD	FROM EOM TO EOM	6	2	2WU	0.159	23	0	0.159																		
2026CPT.01.17.20282	Dare	29	SR-1505 / SUTTON PL	FROM DEAD END TO SR 1276-WOODALL WAY	6	2	2WU	0.111	19	0	0.111																		
2026CPT.01.17.20282	Dare	30	SR-1511 / SEA VIEW DR	FROM SR 1276 (WOODALL WAY) TO CDS	6	2	2WU	0.115	19	0	0.115																		
2026CPT.01.17.20282	Dare	31	SR-1526 / CEDAR CT	FROM NC 12 TO CDS	6	2	2WU	0.07	19	0	0.07																		
2026CPT.01.17.20282	Dare	32	SR-1554 / EMPIRE GEM LN	FROM DEAD END TO SR 1276-WOODALL WAY	6	2	2WU	0.123	14	0	0.123																		
TOTAL FOR PROJ NO. 2026CPT.01.17.20282								1.264																					
GRAND TOTAL								14.073				3	3	3	3	3	1	14	5	8	8	11	5	3	1	8	2	2	

NOTES: Less than 5' - 10' undisturbed buffer from ROW, ditchline, water feature, or drainage inlet, add BMP.

BMP Options: Wattle or Silt Fence

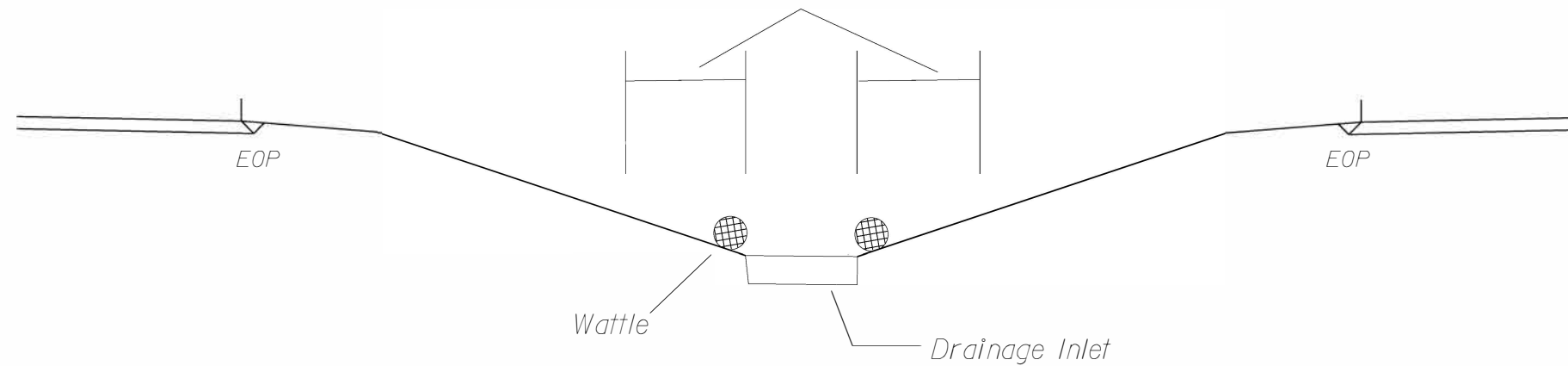
EROSION CONTROL DETAIL



Use BMP's if shoulders and/or frontslopes and/or ditchline and/or backslopes are disturbed



< 5' - 10' Undisturbed buffer from inlet, add wattle



NOT TO SCALE

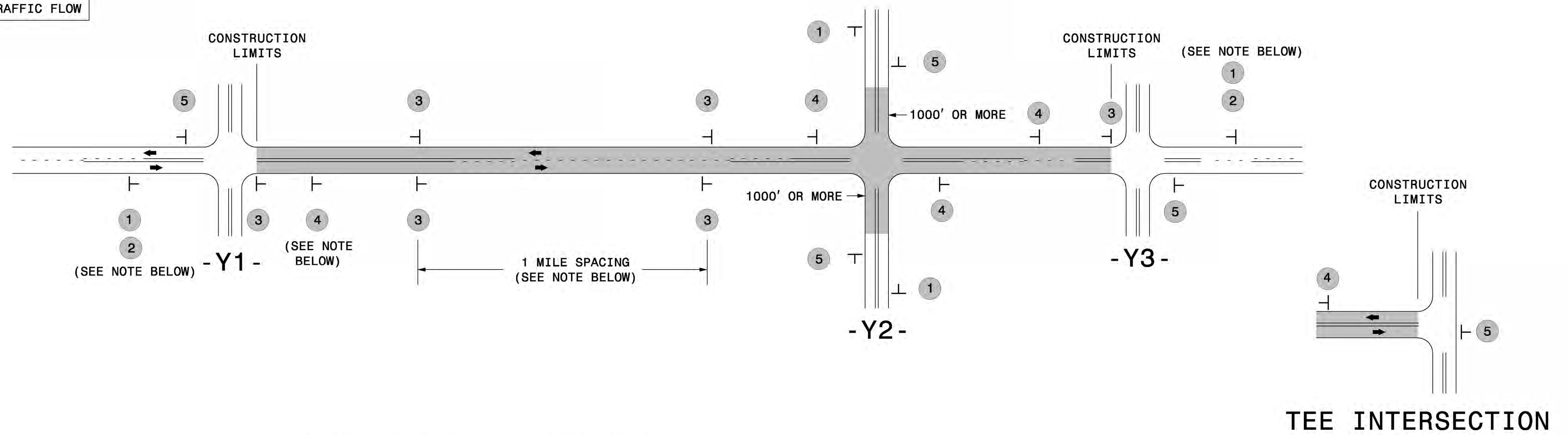
DIVISION OF HIGHWAYS
STATE OF NORTH CAROLINA

SOIL STABILIZATION TIMEFRAMES

SITE DESCRIPTION	STABILIZATION TIME	TIMEFRAME EXCEPTIONS
PERIMETER DIKES, SWALES, DITCHES AND SLOPES	7 DAYS	NONE
HIGH QUALITY WATER (HQW) ZONES	7 DAYS	NONE
SLOPES STEEPER THAN 3:1	7 DAYS	IF SLOPES ARE 10' OR LESS IN LENGTH AND ARE NOT STEEPER THAN 2:1, 14 DAYS ARE ALLOWED.
SLOPES 3:1 OR FLATTER	14 DAYS	7 DAYS FOR SLOPES GREATER THAN 50' IN LENGTH.
ALL OTHER AREAS WITH SLOPES FLATTER THAN 4:1	14 DAYS	NONE, EXCEPT FOR PERIMETERS AND HQW ZONES.

SIGNING FOR RESURFACING PROJECTS

LEGEND
 ┆ STATIONARY SIGN
 ← DIRECTION OF TRAFFIC FLOW



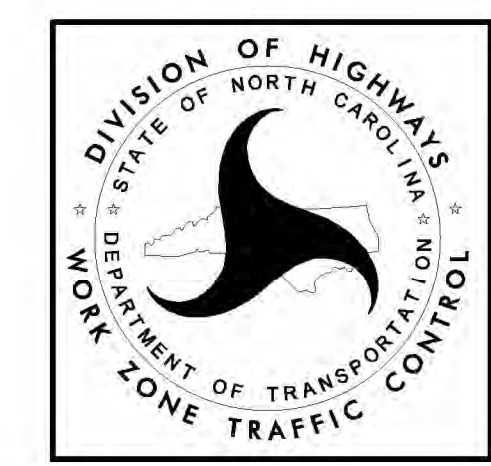
MAINLINE (-L-) SIGNING

-Y- LINE SIGNING

SIGNING NOTES AND PLACEMENT PER DIRECTION	 	<p>PLACE 1000' PRIOR TO BEGINNING OF CONSTRUCTION LIMITS. ONLY USED ON -Y- LINES IF RESURFACING LIMITS EXTEND 1000' ALONG -Y- LINE.</p> <p>#2 SIGN ONLY USED WHEN CONSTRUCTION LIMITS ARE 2 OR MORE MILES IN LENGTH. ROUND UP TO NEXT WHOLE NUMBER. (NO FRACTIONAL OR DECIMAL NUMBERS)</p>	<p>NO REQUIRED STATIONARY SIGNING FOR THE FOLLOWING -Y- LINE CONDITIONS:</p> <ol style="list-style-type: none"> LESS THAN 1000' OF RESURFACING ALONG -Y- LINE SUBDIVISION ROADS DEAD END ROADS <p>WHEN PAVING/CONSTRUCTION ACTIVITIES PROCEED ACROSS AN UNSIGNED -Y- LINE, PORTABLE ADVANCE WARNING SIGNS SHALL BE USED ALONG THE -Y- LINE AS SHOWN BELOW. REMOVE UPON COMPLETION OF WORK.</p> <div style="display: flex; justify-content: space-around;"> <div style="text-align: center;"> PLACED 500' IN ADVANCE OF FLAGGER. </div> <div style="text-align: center;"> PLACED 250' IN ADVANCE OF FLAGGER. </div> </div>
		<p>- PLACE INITIALLY AT THE CONSTRUCTION LIMITS AND SPACE 1 MILE APART THEREAFTER.</p> <p>- AT TEE INTERSECTIONS INSTALL INITIALLY 1/2 MILE FROM INTERSECTION AND SPACE 1 MILE APART THEREAFTER.</p>	
		<p>- THESE ARE FOR -Y- LINES THAT ARE "THROUGH" ROADWAYS.</p> <p>- DEAD END AND SUBDIVISION ROADS ARE NOT "THROUGH" ROADWAYS.</p> <p>- INSTALL 500' +/- FROM EACH -Y- LINE APPROACH AS SHOWN ABOVE.</p> <p>- FOR MULTIPLE -Y- LINES THAT ARE SEPARATED BY 0.25 MILES OR LESS, TREAT AS A SINGLE UNIT AND INSTALL WITHIN 500' OF EACH APPROACH.</p> <p>- A MAXIMUM OF 2 SIGN SETS PER MILE. DO NOT INSTALL WHEN -Y- LINES ARE WITHIN 0.5 MILES FROM "END ROAD WORK" SIGN.</p> <p>- FOR TEE INTERSECTIONS, INSTALL WITHIN 500' +/- OF THE INTERSECTION ALONG -L- LINE.</p>	
		<p>PLACE 500' FOLLOWING THE END OF CONSTRUCTION LIMITS OR AS SHOWN WHEN WORK ENDS AT A 3-WAY TEE INTERSECTION.</p>	
	<p>THE ABOVE SIGNS ARE ALL THAT ARE REQUIRED FOR A CONTRACTOR TO BEGIN A RESURFACING CONTRACT. ANY ADDITIONAL SIGNS REQUESTED BY NCDOT DIVISIONS SHALL BE INSTALLED WITHIN 7 BUSINESS DAYS OF THE START OF CONTRACT WORK.</p>		

MAPS LESS THAN 2 MILES

FOR RESURFACING MAPS WITH CONSTRUCTION LIMITS LESS THAN 2 MILES IN LENGTH, NO STATIONARY SIGNS ARE REQUIRED. USE PORTABLE "ROAD UNDER CONSTRUCTION" OR "ROAD WORK AHEAD" SIGNS IN LIEU OF STATIONARY ADVANCE WARNINGS SIGNS.



ADVANCE WARNING SIGNS FOR RURAL AND SUBURBAN 2-LANE ROADWAY RESURFACING

5/15/2017 S:\T\WZTC\Resurfacing\2L2W & AST Resurfacing Details\Resurfacing_AdvWarn_2Ln.dgn User:keads